

PACO27653

---

## Product Information

**Size:**

50ug

**Reactivity:**

Human

**Source:**

Rabbit

**Isotype:**

IgG

**Applications:**

ELISA, IHC

**Recommended dilutions:**

ELISA:1:2000-1:10000, IHC:1:20-1:200

**Protein Background:**

cytoplasm, cytosol, inositol-1,3,4-trisphosphate 1-phosphatase activity, inositol-1,4-bisphosphate 1-phosphatase activity, magnesium ion binding, inositol phosphate dephosphorylation, inositol phosphate metabolic process, phosphate-containing compound metabolic process, signal transduction, small molecule metabolic process.

**Gene ID:**

INPP1

**Uniprot**

P49441

**Synonyms:**

Inositol polyphosphate 1-phosphatase (IPP) (IPPase) (EC 3.1.3.57), INPP1

**Immunogen:**

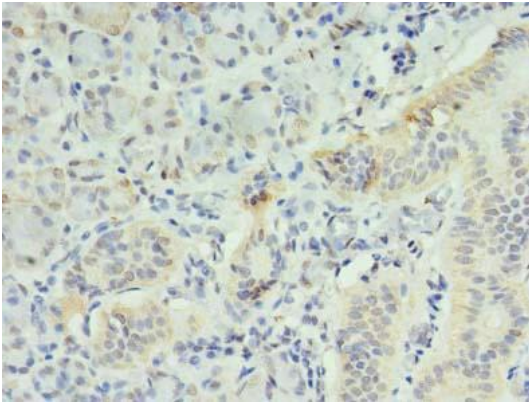
Recombinant Human Inositol polyphosphate 1-phosphatase protein (1-175AA).

**Storage:**

Preservative: 0.03% Proclin 300. Constituents: 50% Glycerol, 0.01M PBS, PH 7.4

## Product Images

---



Immunohistochemistry of paraffin-embedded human pancreatic tissue using PACO27653 at dilution of 1:100.