

PACO27613

---

## Product Information

**Size:**

50ug

**Reactivity:**

Human

**Source:**

Rabbit

**Isotype:**

IgG

**Applications:**

ELISA, WB, IHC

**Recommended dilutions:**

ELISA:1:2000-1:10000, WB:1:500-1:5000,  
IHC:1:20-1:200

**Protein Background:**

Common subunit for the receptors for a variety of interleukins.

**Gene ID:**

IL2RG

**Uniprot**

P31785

**Synonyms:**

Cytokine receptor common subunit gamma (Interleukin-2 receptor subunit gamma) (IL-2 receptor subunit gamma) (IL-2R subunit gamma) (IL-2RG) (gammaC) (p64) (CD antigen CD132), IL2RG

**Immunogen:**

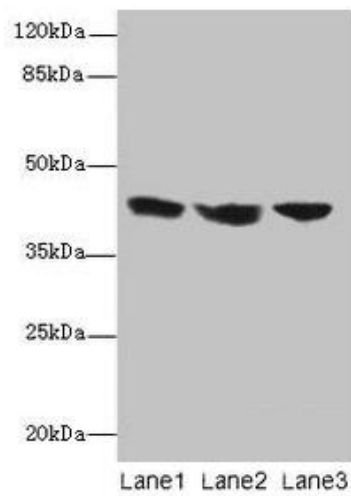
Recombinant Human Cytokine receptor common subunit &gamma; protein (75-230AA).

**Storage:**

Preservative: 0.03% Proclin 300. Constituents: 50% Glycerol, 0.01M PBS, PH 7.4

## Product Images

---



### Western blot

All lanes: IL2RG antibody at 12 $\mu$ g/ml

Lane 1: Jurkat whole cell lysate

Lane 2: K562 whole cell lysate

Lane 3: HL60 whole cell lysate

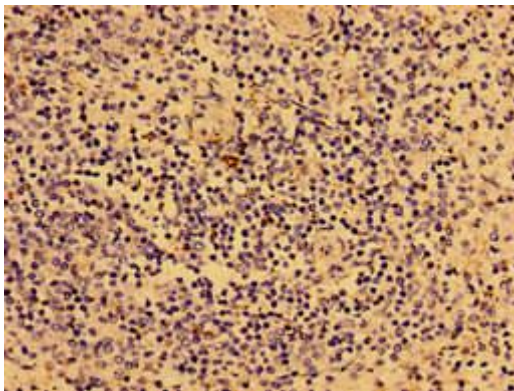
Secondary

Goat polyclonal to rabbit IgG at 1/10000 dilution

Predicted band size: 43, 21 kDa

Observed band size: 43 kDa

.



Immunohistochemistry of paraffin-embedded human spleen tissue using PACO27613 at dilution of 1:100.