

IFNA10 Antibody



PACO27521

Product Information

Size:

50ug

Reactivity:

Human, Mouse

Source:

Rabbit

Isotype:

IgG

Applications:

ELISA, WB, IHC

Recommended dilutions:

ELISA:1:2000-1:10000, WB:1:500-1:5000,
IHC:1:20-1:200

Protein Background:

Produced by macrophages, IFN-alpha have antiviral activities. Interferon stimulates the production of two enzymes: a protein kinase and an oligoadenylate synthetase.

Gene ID:

IFNA10

Uniprot

P01566

Synonyms:

Interferon alpha-10 (IFN-alpha-10) (Interferon alpha-6L) (Interferon alpha-C) (LeIF C),
IFNA10

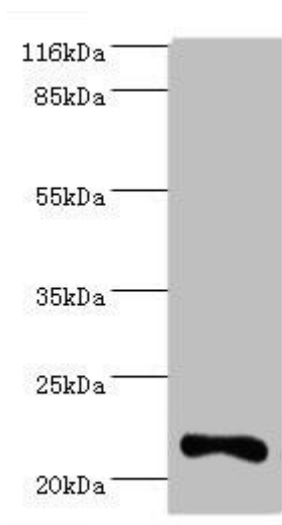
Immunogen:

Recombinant huamn Interferon alpha-10 protein (24-189AA).

Storage:

Preservative: 0.03% Proclin 300. Constituents: 50% Glycerol, 0.01M PBS, PH 7.4

Product Images



Western blot

All lanes: IFNA10 antibody at 2 μ g/ml + Mouse kidney tissue

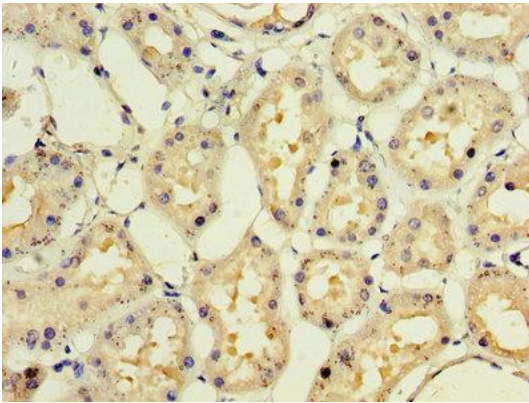
Secondary

Goat polyclonal to rabbit IgG at 1/10000 dilution

Predicted band size: 22 kDa

Observed band size: 22 kDa

.



Immunohistochemistry of paraffin-embedded human kidney tissue using PACO27521 at dilution of 1:100.