

HTR1E Antibody



PACO27465

Product Information

Size:

50ug

Reactivity:

Human

Source:

Rabbit

Isotype:

IgG

Applications:

ELISA, WB, IHC, IF

Recommended dilutions:

ELISA:1:2000-1:10000, WB:1:500-1:5000,
IHC:1:20-1:200, IF:1:50-1:200

Protein Background:

G-protein coupled receptor for 5-hydroxytryptamine (serotonin). Also functions as a receptor for various alkaloids and psychoactive substances. Ligand binding causes a conformation change that triggers signaling via guanine nucleotide-binding proteins (G proteins) and modulates the activity of down-stream effectors, such as adenylate cyclase. Signaling inhibits adenylate cyclase activity.

Gene ID:

HTR1E

Uniprot

P28566

Synonyms:

5-hydroxytryptamine receptor 1E (5-HT-1E) (5-HT1E) (S31) (Serotonin receptor 1E),
HTR1E

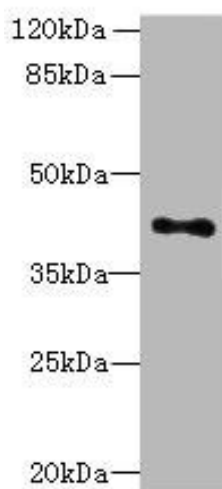
Immunogen:

Recombinant Human 5-hydroxytryptamine receptor 1E protein (203-291AA).

Storage:

Preservative: 0.03% Proclin 300. Constituents: 50% Glycerol, 0.01M PBS, PH 7.4

Product Images



Western blot

All lanes: HTR1E antibody at 3.3 μ g/ml + HeLa whole cell lysate

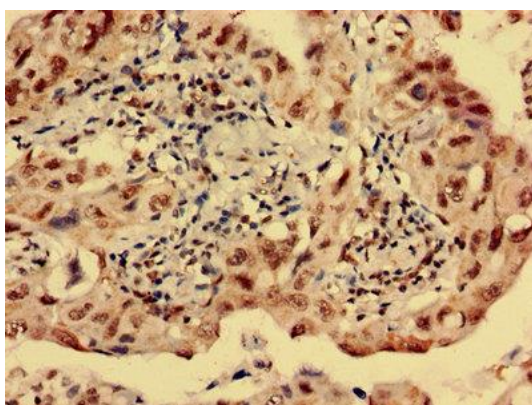
Secondary

Goat polyclonal to rabbit IgG at 1/10000 dilution

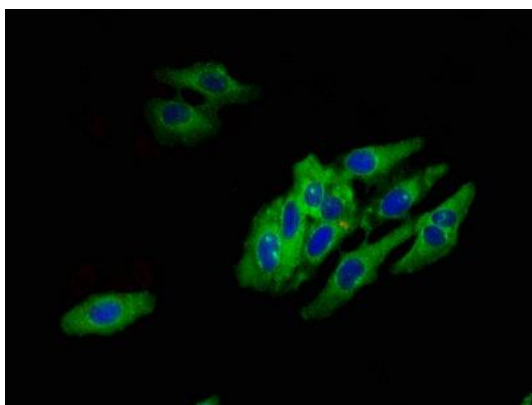
Predicted band size: 42 kDa

Observed band size: 42 kDa

.



Immunohistochemistry analysis of human lung cancer using PACO27465 at dilution of 1:100.



Immunofluorescent analysis of HeLa cells using PACO27465 at dilution of 1:100 and Alexa Fluor 488-conjugated AffiniPure Goat Anti-Rabbit IgG(H+L).