

Product Information

Size:

50ug

Reactivity:

Human

Source:

Rabbit

Isotype:

IgG

Applications:

ELISA, IHC

Recommended dilutions:

ELISA:1:2000-1:10000, IHC:1:20-1:200

Protein Background:

Required during prometaphase for centrosome maturation. Following poly-ADP-ribosylation (PARsylation) by TNKS, translocates from the Golgi apparatus to mitotic centrosomes and plays a key role in the formation of robust microtubules for prompt movement of chromosomes: anchors AKAP9/CG-NAP, a scaffold protein of the gamma-tubulin ring complex and promotes centrosome maturation.

Gene ID:

HEPACAM2

Uniprot

A8MVW5

Synonyms:

HEPACAM family member 2 (Mitotic kinetics regulator), HEPACAM2, MIKI

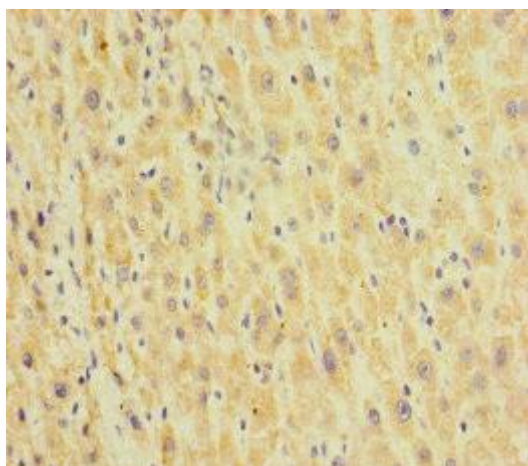
Immunogen:

Recombinant Human HEPACAM family member 2 protein (32-351AA).

Storage:

Preservative: 0.03% Proclin 300. Constituents: 50% Glycerol, 0.01M PBS, PH 7.4

Product Images



Immunohistochemistry of paraffin-embedded human liver cancer using PACO27349 at dilution of 1:100.