

# GTF2E2 Antibody



PACO27249

---

## Product Information

**Size:**

50ug

**Reactivity:**

Human, Mouse

**Source:**

Rabbit

**Isotype:**

IgG

**Applications:**

ELISA, WB

**Recommended dilutions:**

ELISA:1:2000-1:10000, WB:1:1000-1:5000

**Protein Background:**

**Gene ID:**

GTF2E2

**Uniprot**

P29084

**Synonyms:**

Transcription initiation factor IIE subunit beta (TFIIE-beta) (General transcription factor IIE subunit 2), GTF2E2, TF2E2

**Immunogen:**

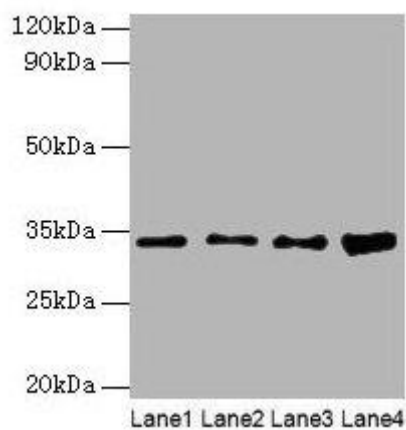
Recombinant Human Transcription initiation factor IIE subunit &beta; protein (1-291AA).

**Storage:**

Preservative: 0.03% Proclin 300. Constituents: 50% Glycerol, 0.01M PBS, PH 7.4

## Product Images

---



### Western blot

All lanes: GTF2E2 antibody at 2 $\mu$ g/ml

Lane 1: Mouse brain tissue

Lane 2: Hela whole cell lysate

Lane 3: MCF-7 whole cell lysate

Lane 4: PC-3 whole cell lysate

Secondary

Goat polyclonal to rabbit IgG at 1/10000 dilution

Predicted band size: 34 kDa

Observed band size: 34 kDa