

GTF2B Antibody



PACO27245

Product Information

Size:

50ug

Reactivity:

Human

Source:

Rabbit

Isotype:

IgG

Applications:

ELISA, WB, IHC, IF

Recommended dilutions:

ELISA:1:2000-1:10000, WB:1:500-1:5000,
IHC:1:20-1:200, IF:1:50-1:200

Protein Background:

General factor that plays a major role in the activation of eukaryotic genes transcribed by RNA polymerase II.

Gene ID:

GTF2B

Uniprot

Q00403

Synonyms:

Transcription initiation factor IIB (General transcription factor TFIIB) (S300-II), GTF2B, TF2B TFIIB

Immunogen:

Recombinant Human Transcription initiation factor IIB protein (1-316AA).

Storage:

Preservative: 0.03% Proclin 300. Constituents: 50% Glycerol, 0.01M PBS, PH 7.4

Product Images



Western blot

All lanes: GTF2B antibody at 2 μ g/ml

Lane 1: HepG2 whole cell lysate

Lane 2: HeLa whole cell lysate

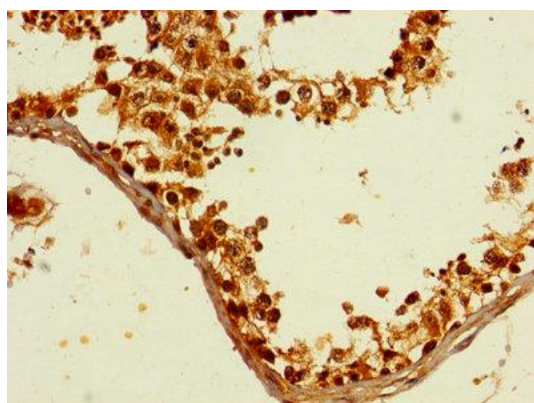
Secondary

Goat polyclonal to rabbit IgG at 1/15000 dilution

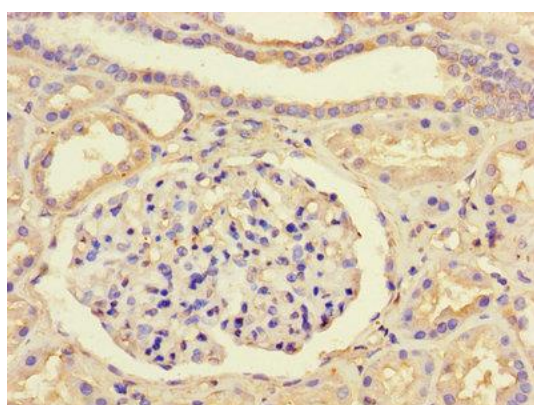
Predicted band size: 35 kDa

Observed band size: 35 kDa

.



Immunohistochemistry of paraffin-embedded human testis tissue using PACO27245 at dilution of 1:100.



Immunohistochemistry of paraffin-embedded human kidney tissue using PACO27245 at dilution of 1:100.