

PACO27193

Product Information

Size:

50ug

Reactivity:

Human

Source:

Rabbit

Isotype:

IgG

Applications:

ELISA, WB, IHC, IF

Recommended dilutions:

ELISA:1:2000-1:10000, WB:1:500-1:5000,
IHC:1:20-1:200, IF:1:50-1:200

Protein Background:

Specifically phosphorylates the activated forms of G protein-coupled receptors. GRK4-alpha can phosphorylate rhodopsin and its activity is inhibited by calmodulin; the other three isoforms do not phosphorylate rhodopsin and do not interact with calmodulin. GRK4-alpha and GRK4-gamma phosphorylate DRD3. Phosphorylates ADRB2.

Gene ID:

GRK4

Uniprot

P32298

Synonyms:

G protein-coupled receptor kinase 4 (EC 2.7.11.16) (G protein-coupled receptor kinase GRK4) (IT1), GRK4, GPRK2L GPRK4

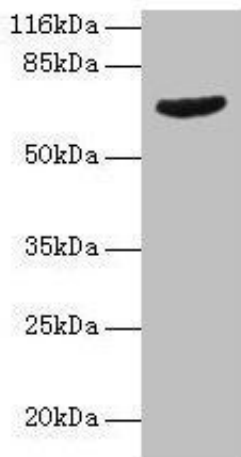
Immunogen:

Recombinant Human G protein-coupled receptor kinase 4 protein (1-245AA).

Storage:

Preservative: 0.03% Proclin 300. Constituents: 50% Glycerol, 0.01M PBS, PH 7.4

Product Images



Western blot

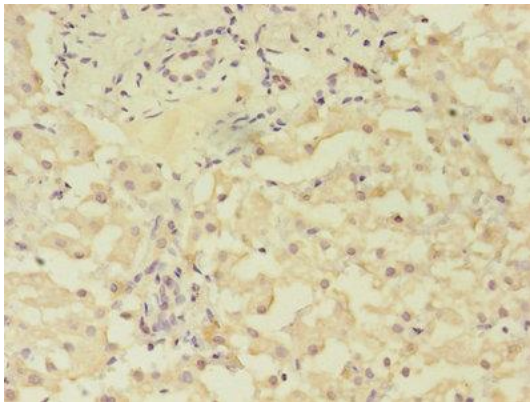
All lanes: GRK4 antibody at 2 μ g/ml + Jurkat whole cell lysate

Secondary

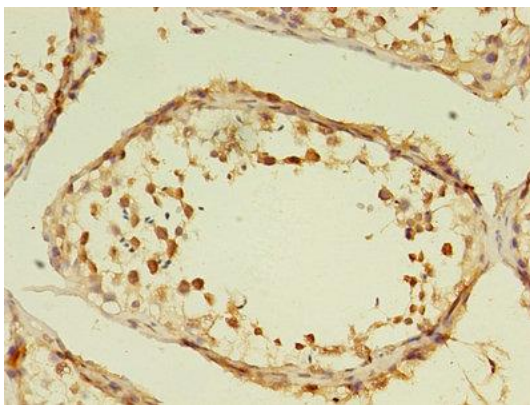
Goat polyclonal to rabbit IgG at 1/10000 dilution

Predicted band size: 67, 64, 58, 62 kDa

Observed band size: 67 kDa



Immunohistochemistry of paraffin-embedded human liver cancer using PACO27193 at dilution of 1:100.



Immunohistochemistry of paraffin-embedded human testis tissue using PACO27193 at dilution of 1:100.