

GPD1 Antibody



PACO27141

Product Information

Size:

50ug

Reactivity:

Human

Source:

Rabbit

Isotype:

IgG

Applications:

ELISA, IHC, IF

Recommended dilutions:

ELISA:1:2000-1:10000, IHC:1:20-1:200,
IF:1:50-1:200

Protein Background:

Gene ID:

GPD1

Uniprot

P21695

Synonyms:

Glycerol-3-phosphate dehydrogenase [NAD(+)], cytoplasmic (GPD-C) (GPDH-C) (EC 1.1.1.8), GPD1

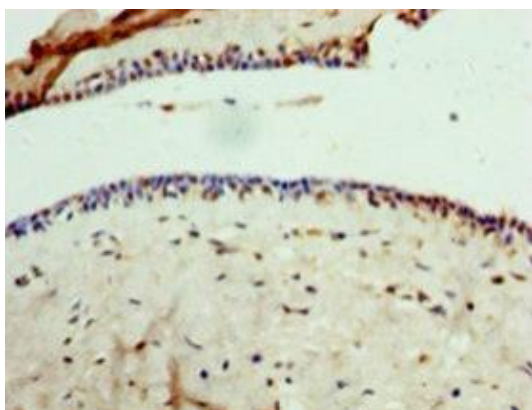
Immunogen:

Recombinant Human Glycerol-3-phosphate dehydrogenase [NAD(+)], cytoplasmic protein (1-349AA).

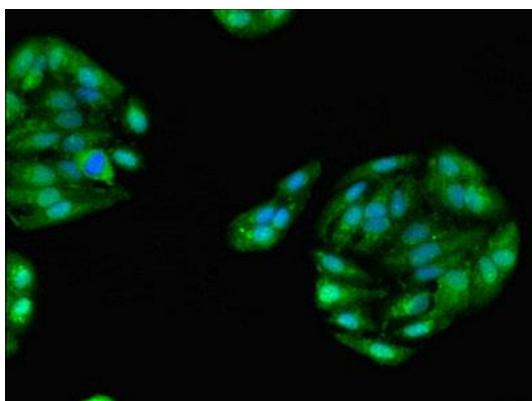
Storage:

Preservative: 0.03% Proclin 300. Constituents: 50% Glycerol, 0.01M PBS, PH 7.4

Product Images



Immunohistochemistry of paraffin-embedded human breast cancer using PACO27141 at dilution of 1:100.



Immunofluorescent analysis of HepG2 cells using PACO27141 at dilution of 1:100 and Alexa Fluor 488-conjugated AffiniPure Goat Anti-Rabbit IgG(H+L).