

### Product Information

**Size:**

50ug

**Reactivity:**

Human

**Source:**

Rabbit

**Isotype:**

IgG

**Applications:**

ELISA, WB, IF

**Recommended dilutions:**

ELISA:1:2000-1:10000, WB:1:500-1:5000,  
IF:1:50-1:200

**Protein Background:**

Possible regulatory or functional link with the histocompatibility cluster.

**Gene ID:**

GNL1

**Uniprot**

P36915

**Synonyms:**

Guanine nucleotide-binding protein-like 1 (GTP-binding protein HSR1), GNL1, HSR1

**Immunogen:**

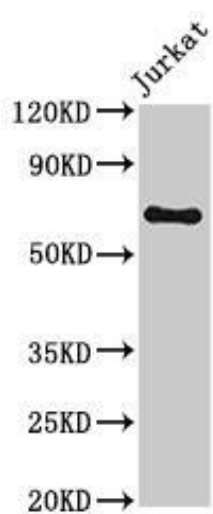
Recombinant Human Guanine nucleotide-binding protein-like 1 protein (251-500AA).

**Storage:**

Preservative: 0.03% Proclin 300. Constituents: 50% Glycerol, 0.01M PBS, PH 7.4

## Product Images

---



### Western Blot

Positive WB detected in: Jurkat whole cell lysate

All lanes: GNL1 antibody at 3.2 $\mu$ g/ml

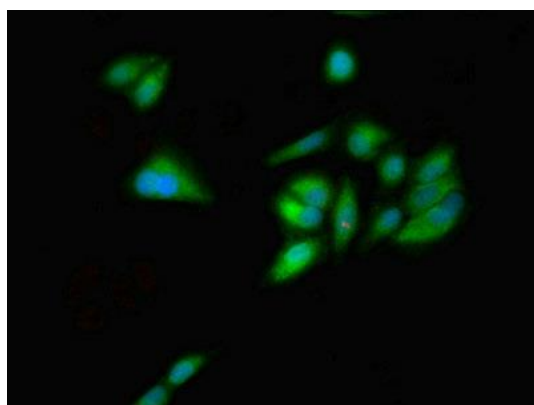
Secondary

Goat polyclonal to rabbit IgG at 1/50000 dilution

Predicted band size: 69, 48 kDa

Observed band size: 69 kDa

.



Immunofluorescent analysis of HeLa cells using PACO27101 at dilution of 1:100 and Alexa Fluor 488-conjugated AffiniPure Goat Anti-Rabbit IgG(H+L).