

# GLT8D2 Antibody



PACO27045

---

## Product Information

**Size:**

50ug

**Reactivity:**

Human, Mouse

**Source:**

Rabbit

**Isotype:**

IgG

**Applications:**

ELISA, WB

**Recommended dilutions:**

ELISA:1:2000-1:10000, WB:1:1000-1:5000

**Protein Background:**

**Gene ID:**

GLT8D2

**Uniprot**

Q9H1C3

**Synonyms:**

Glycosyltransferase 8 domain-containing protein 2 (EC 2.4.1. -), GLT8D2, GALA4A

**Immunogen:**

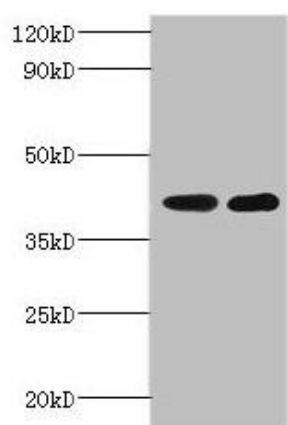
Recombinant Human Glycosyltransferase 8 domain-containing protein 2 protein (25-349AA).

**Storage:**

Preservative: 0.03% Proclin 300. Constituents: 50% Glycerol, 0.01M PBS, PH 7.4

## Product Images

---



### Western blot

All lanes: Glycosyltransferase 8 domain-containing protein 2 antibody at 2 $\mu$ g/ml

Lane 1: Mouse heart tissue

Lane 2: Mouse kidney tissue

Secondary

Goat polyclonal to rabbit IgG at 1/10000 dilution

Predicted band size: 40 kDa

Observed band size: 40 kDa

.