

PACO27037

Product Information

Size:

50ug

Reactivity:

Human, Mouse

Source:

Rabbit

Isotype:

IgG

Applications:

ELISA, WB, IHC

Recommended dilutions:

ELISA:1:2000-1:10000, WB:1:1000-1:5000,
IHC:1:20-1:200

Protein Background:

Catalyzes the first reaction in the primary pathway for the renal catabolism of glutamine. Plays a role in maintaining acid, base homeostasis. Regulates the levels of the neurotransmitter glutamate in the brain. Isoform 2 lacks catalytic activity.

Gene ID:

GLS

Uniprot

O94925

Synonyms:

Glutaminase kidney isoform, mitochondrial (GLS) (EC 3.5.1.2) (K-glutaminase) (L-glutamine amidohydrolase), GLS, GLS1 KIAA0838

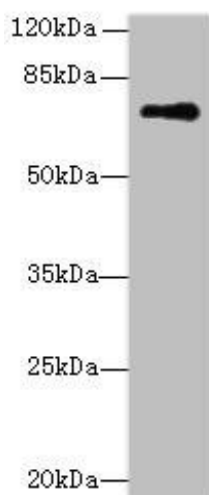
Immunogen:

Recombinant Human Glutaminase kidney isoform, mitochondrial protein (616-669AA).

Storage:

Preservative: 0.03% Proclin 300. Constituents: 50% Glycerol, 0.01M PBS, PH 7.4

Product Images



Western blot

All lanes: GLS antibody at 5 μ g/ml + Mouse brain tissue

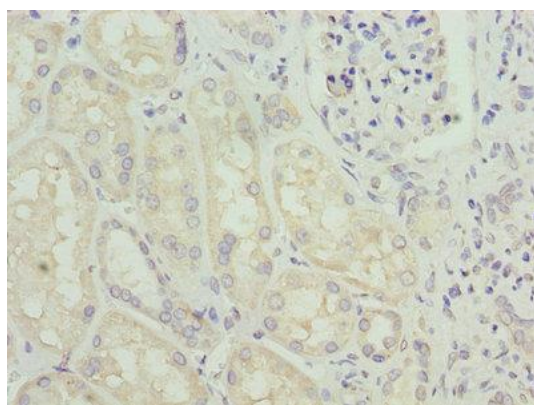
Secondary

Goat polyclonal to rabbit IgG at 1/10000 dilution

Predicted band size: 74, 18, 66 kDa

Observed band size: 74 kDa

.



Immunohistochemistry of paraffin-embedded human kidney tissue using PACO27037 at dilution of 1:100.