

PACO27029

---

## Product Information

**Size:**

50ug

**Reactivity:**

Human, Mouse

**Source:**

Rabbit

**Isotype:**

IgG

**Applications:**

ELISA, WB, IF

**Recommended dilutions:**

ELISA:1:2000-1:10000, WB:1:1000-1:5000,  
IF:1:50-1:200

**Protein Background:**

This is a receptor for glucagon-like peptide 1. The activity of this receptor is mediated by G proteins which activate adenylyl cyclase.

**Gene ID:**

GLP1R

**Uniprot**

P43220

**Synonyms:**

Glucagon-like peptide 1 receptor (GLP-1 receptor) (GLP-1-R) (GLP-1R), GLP1R

**Immunogen:**

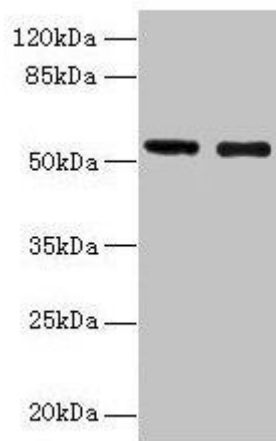
Recombinant Human Glucagon-like peptide 1 receptor protein (24-145AA).

**Storage:**

Preservative: 0.03% Proclin 300. Constituents: 50% Glycerol, 0.01M PBS, PH 7.4

## Product Images

---



### Western blot

All lanes: GLP1R antibody at 12 $\mu$ g/ml

Lane 1: Mouse heart tissue

Lane 2: 293T whole cell lysate

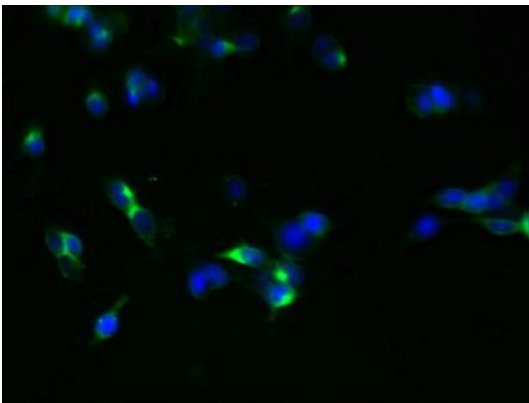
Secondary

Goat polyclonal to rabbit IgG at 1/10000 dilution

Predicted band size: 54 kDa

Observed band size: 54 kDa

.



Immunofluorescent analysis of 293T cells using PACO27029 at dilution of 1:100 and Alexa Fluor 488-conjugated AffiniPure Goat Anti-Rabbit IgG(H+L).