

Product Information

Size:

50ug

Reactivity:

Human

Source:

Rabbit

Isotype:

IgG

Applications:

ELISA, WB, IHC, IF

Recommended dilutions:

ELISA:1:2000-1:10000, WB:1:500-1:5000,
IHC:1:20-1:200, IF:1:50-1:200

Protein Background:

This is a receptor for glucagon-like peptide 1. The activity of this receptor is mediated by G proteins which activate adenylyl cyclase.

Gene ID:

GLP1R

Uniprot

P43220

Synonyms:

Glucagon-like peptide 1 receptor (GLP-1 receptor) (GLP-1-R) (GLP-1R), GLP1R

Immunogen:

Recombinant Human Glucagon-like peptide 1 receptor protein (24-145AA).

Storage:

Preservative: 0.03% Proclin 300. Constituents: 50% Glycerol, 0.01M PBS, PH 7.4

Product Images



Western blot

All lanes: GLP1R antibody at 2 μ g/ml + 293T whole cell lysate

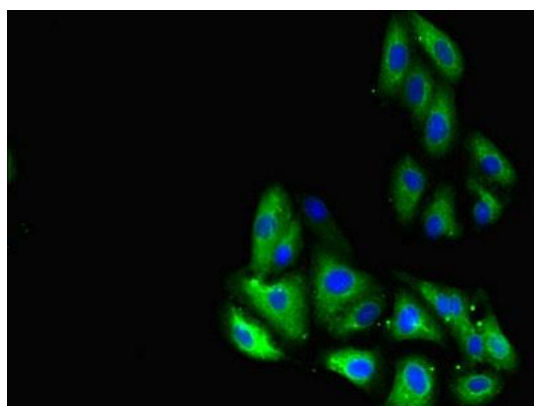
Secondary

Goat polyclonal to rabbit IgG at 1/10000 dilution

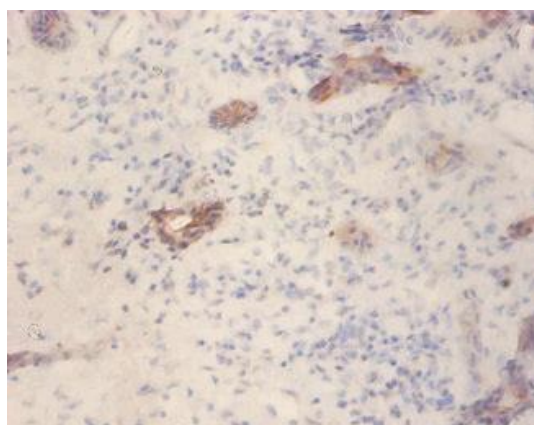
Predicted band size: 54 kDa

Observed band size: 54 kDa

.



Immunofluorescent analysis of HepG2 cells using PACO27025 at dilution of 1:100 and Alexa Fluor 488-conjugated AffiniPure Goat Anti-Rabbit IgG(H+L).



Immunohistochemistry of paraffin-embedded human pancreatic tissue using PACO27025 at dilution of 1:100.