

PACO27013

Product Information

Size:

50ug

Reactivity:

Human, Mouse, Rat

Source:

Rabbit

Isotype:

IgG

Applications:

ELISA, WB, IHC

Recommended dilutions:

ELISA:1:2000-1:10000, WB:1:1000-1:5000,
IHC:1:20-1:200

Protein Background:

Converts D-glucuronic acid, residues adjacent to N-sulfate sugar residues to L-iduronic acid, residues, both in maturing heparan sulfate (HS) and heparin chains. This is important for further modifications that determine the specificity of interactions between these glycosaminoglycans and proteins.

Gene ID:

GLCE

Uniprot

O94923

Synonyms:

D-glucuronyl C5-epimerase (EC 5.1.3.17) (Heparan sulfate C5-epimerase) (Hsepi) (Heparin/heparan sulfate: glucuronic acid, C5-epimerase) (Heparosan-N-sulfate-glucuronate 5-epimerase), GLCE, KIAA0836

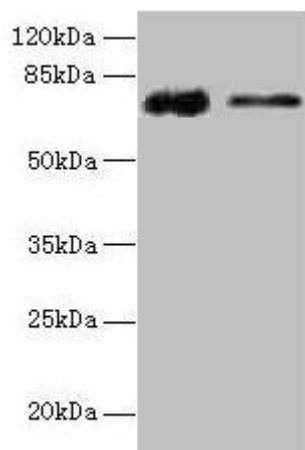
Immunogen:

Recombinant Human D-glucuronyl C5-epimerase protein (29-617AA).

Storage:

Preservative: 0.03% Proclin 300. Constituents: 50% Glycerol, 0.01M PBS, PH 7.4

Product Images



Western blot

All lanes: GLCE antibody at 12 μ g/ml

Lane 1: Rat liver tissue

Lane 2: Mouse kidney tissue

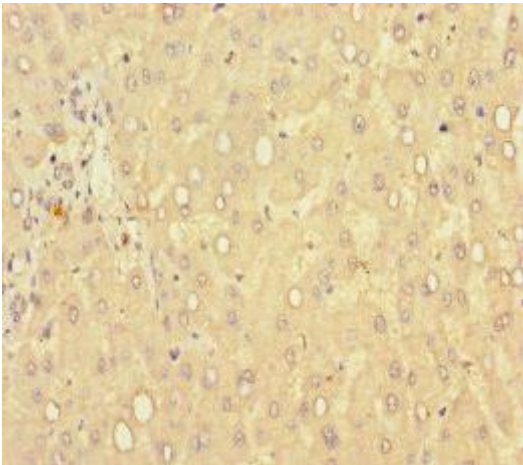
Secondary

Goat polyclonal to rabbit IgG at 1/10000 dilution

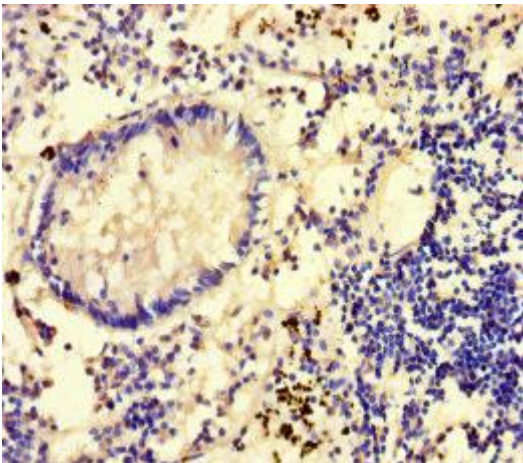
Predicted band size: 71 kDa

Observed band size: 71 kDa

.



Immunohistochemistry of paraffin-embedded human liver tissue using PACO27013 at dilution of 1:100.



Immunohistochemistry of paraffin-embedded human appendix tissue using PACO27013 at dilution of 1:100.