

PACO27005

Product Information

Size:

50ug

Reactivity:

Human

Source:

Rabbit

Isotype:

IgG

Applications:

ELISA, WB, IHC

Recommended dilutions:

ELISA:1:2000-1:10000, WB:1:1000-1:5000,
IHC:1:20-1:200

Protein Background:

Key enzyme in the regulation of glycerol uptake and metabolism.

Gene ID:

GK2

Uniprot

Q14410

Synonyms:

Glycerol kinase 2 (GK 2) (Glycerokinase 2) (EC 2.7.1.30) (ATP: glycerol 3-phosphotransferase 2) (Glycerol kinase, testis specific 2), GK2, GKP2 GKTA

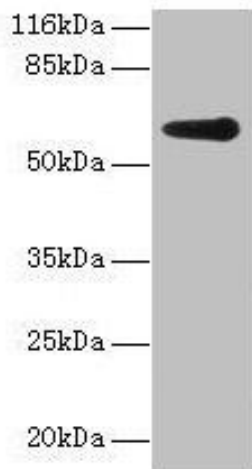
Immunogen:

Recombinant Human Glycerol kinase 2 protein (2-553AA).

Storage:

Preservative: 0.03% Proclin 300. Constituents: 50% Glycerol, 0.01M PBS, PH 7.4

Product Images



Western blot

All lanes: GK2 antibody at 2 μ g/ml + Jurkat whole cell lysate

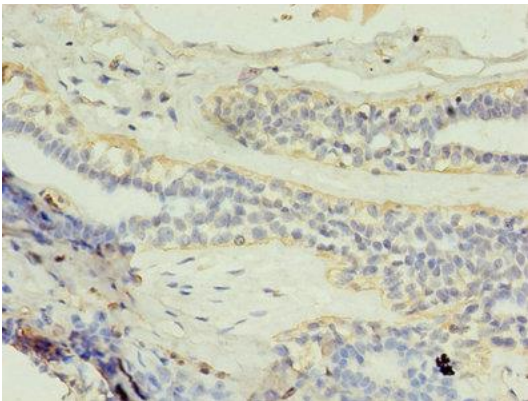
Secondary

Goat polyclonal to rabbit IgG at 1/10000 dilution

Predicted band size: 61 kDa

Observed band size: 61 kDa

.



Immunohistochemistry of paraffin-embedded human breast cancer using PACO27005 at dilution of 1:100.