

PACO26993

Product Information

Size:

50ug

Reactivity:

Human

Source:

Rabbit

Isotype:

IgG

Applications:

ELISA, IHC, IF

Recommended dilutions:

ELISA:1:2000-1:10000, IHC:1:20-1:200,
IF:1:50-1:200

Protein Background:

One gap junction consists of a cluster of closely packed pairs of transmembrane channels, the connexons, through which materials of low MW diffuse from one cell to a neighboring cell.

Gene ID:

GJB5

Uniprot

O95377

Synonyms:

Gap junction beta-5 protein (Connexin-31.1) (Cx31.1), GJB5

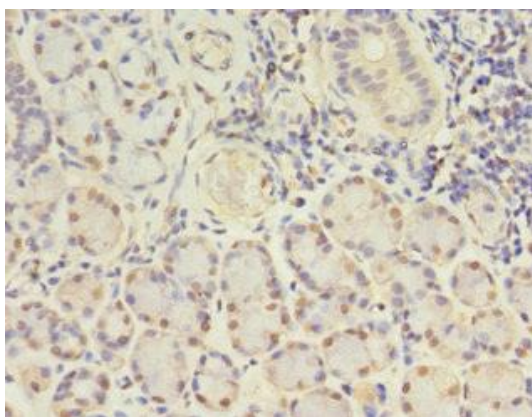
Immunogen:

Recombinant Human Gap junction beta-5 protein (211-273AA).

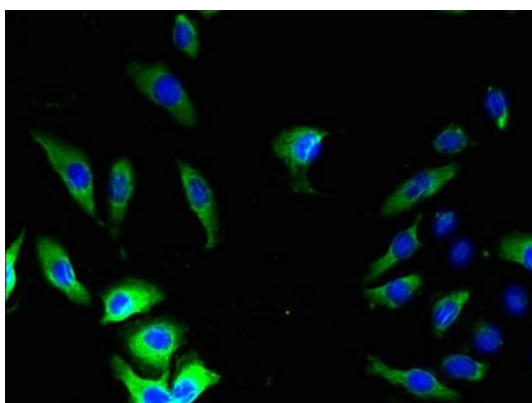
Storage:

Preservative: 0.03% Proclin 300. Constituents: 50% Glycerol, 0.01M PBS, PH 7.4

Product Images



Immunohistochemistry of paraffin-embedded human pancreatic tissue using PACO26993 at dilution of 1:100.



Immunofluorescent analysis of A549 cells using PACO26993 at dilution of 1:100 and Alexa Fluor 488-conjugated AffiniPure Goat Anti-Rabbit IgG(H+L).