

PACO26965

Product Information

Size:

50ug

Reactivity:

Human, Mouse

Source:

Rabbit

Isotype:

IgG

Applications:

ELISA, WB, IHC

Recommended dilutions:

ELISA:1:2000-1:10000, WB:1:500-1:5000,
IHC:1:20-1:200

Protein Background:

anchored component of external side of plasma membrane, extracellular exosome, gamma-glutamyltransferase activity, glutathione metabolic process, leukotriene biosynthetic process.

Gene ID:

GGTLC2

Uniprot

Q14390

Synonyms:

Glutathione hydrolase light chain 2 (Gamma-glutamyltransferase light chain 2) (Gamma-glutamyltransferase-like protein 4), GGTLC2, GGTL4

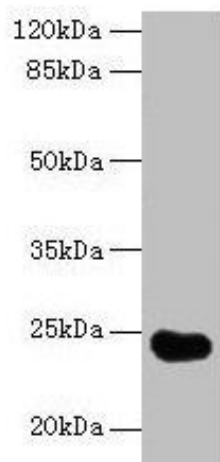
Immunogen:

Recombinant Human Glutathione hydrolase light chain 2 protein (1-218AA).

Storage:

Preservative: 0.03% Proclin 300. Constituents: 50% Glycerol, 0.01M PBS, PH 7.4

Product Images



Western blot

All lanes: GGTL2 antibody at 2 μ g/ml + Mouse kidney tissue

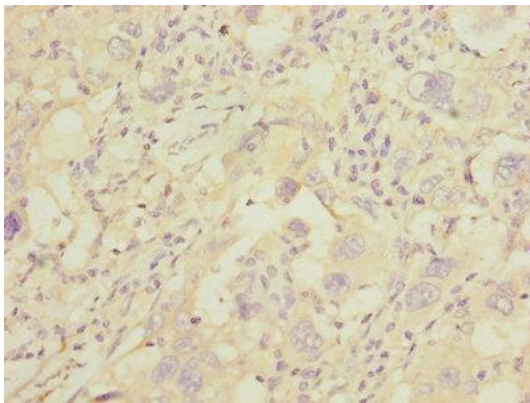
Secondary

Goat polyclonal to rabbit IgG at 1/10000 dilution

Predicted band size: 24 kDa

Observed band size: 24 kDa

.



Immunohistochemistry of paraffin-embedded human liver cancer using PACO26965 at dilution of 1:100.