

PACO26961

---

## Product Information

**Size:**

50ug

**Reactivity:**

Human

**Source:**

Rabbit

**Isotype:**

IgG

**Applications:**

ELISA, IHC

**Recommended dilutions:**

ELISA:1:2000-1:10000, IHC:1:20-1:200

**Protein Background:**

anchored component of external side of plasma membrane, gamma-glutamyltransferase activity, glutathione metabolic process, leukotriene biosynthetic process.

**Gene ID:**

GGTLC1

**Uniprot**

Q9BX51

**Synonyms:**

Glutathione hydrolase light chain 1 (Gamma-glutamyltransferase light chain 1) (Gamma-glutamyltransferase-like activity 4) (Gamma-glutamyltransferase-like protein 6), GGTLC1, GGTLA4

**Immunogen:**

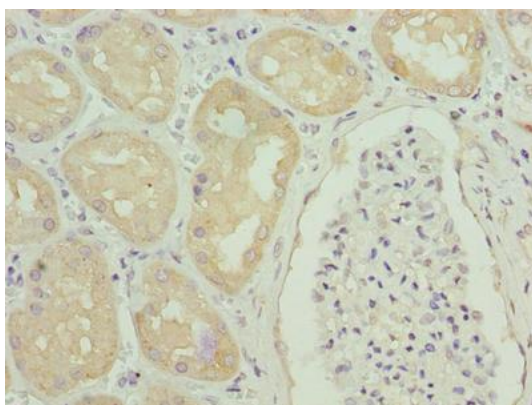
Recombinant Human Glutathione hydrolase light chain 1 protein (1-225AA).

**Storage:**

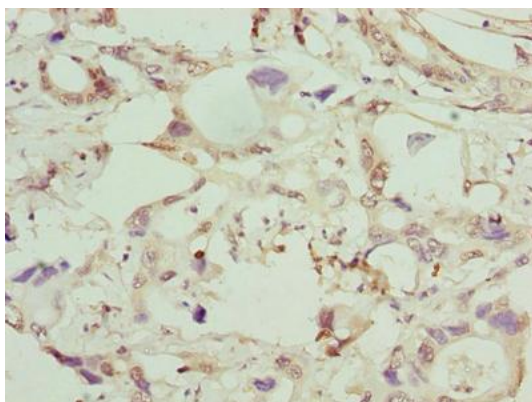
Preservative: 0.03% Proclin 300. Constituents: 50% Glycerol, 0.01M PBS, PH 7.4

## Product Images

---



Immunohistochemistry of paraffin-embedded human kidney tissue using PACO26961 at dilution of 1:100.



Immunohistochemistry of paraffin-embedded human pancreatic cancer using PACO26961 at dilution of 1:100.