

## Product Information

**Size:**

50ug

**Reactivity:**

Human

**Source:**

Rabbit

**Isotype:**

IgG

**Applications:**

ELISA, IHC, IF

**Recommended dilutions:**

ELISA:1:2000-1:10000, IHC:1:20-1:200,  
IF:1:50-1:200

**Protein Background:**

Associates with a variety of FcR alpha chains to form a functional signaling complex. Regulates several aspects of the immune response. The gamma subunit has a critical role in allowing the IgE Fc receptor to reach the cell surface. Also involved in collagen-mediated platelet activation and in neutrophil activation mediated by integrin.

**Gene ID:**

FCER1G

**Uniprot**

P30273

**Synonyms:**

High affinity immunoglobulin epsilon receptor subunit gamma (Fc receptor gamma-chain) (FcRgamma) (Fc-epsilon RI-gamma) (IgE Fc receptor subunit gamma) (FceRI gamma), FCER1G

**Immunogen:**

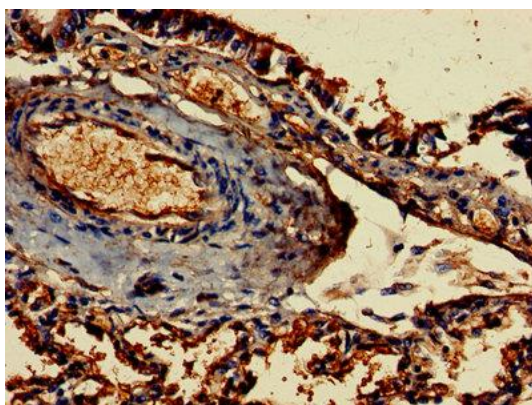
Recombinant Human High affinity immunoglobulin epsilon receptor subunit &gamma; protein (19-86AA).

**Storage:**

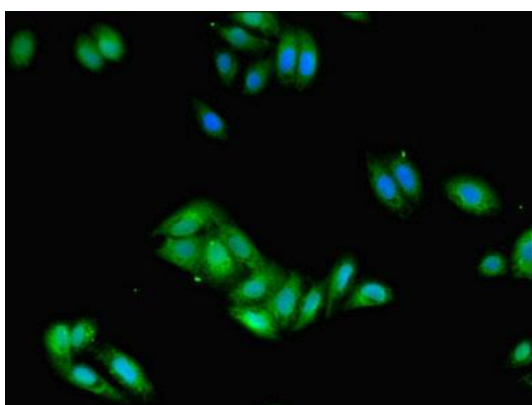
Preservative: 0.03% Proclin 300. Constituents: 50% Glycerol, 0.01M PBS, PH 7.4

## Product Images

---



Immunohistochemistry of paraffin-embedded human lung tissue using PACO26705 at dilution of 1:100.



Immunofluorescent analysis of HepG2 cells using PACO26705 at dilution of 1:100 and Alexa Fluor 488-conjugated AffiniPure Goat Anti-Rabbit IgG(H+L).