

FAM168B Antibody



PACO26657

Product Information

Size:

50ug

Reactivity:

Human

Source:

Rabbit

Isotype:

IgG

Applications:

ELISA, IHC, IF

Recommended dilutions:

ELISA:1:2000-1:10000, IHC:1:20-1:200,
IF:1:50-1:200

Protein Background:

Modulates neuronal axonal outgrowth by acting as a negative regulator of CDC42 and STAT3 and a positive regulator of STMN2. Positive regulator of CDC27.

Gene ID:

FAM168B

Uniprot

A1KXE4

Synonyms:

Myelin-associated neurite-outgrowth inhibitor (Mani) (p20), FAM168B, KIAA0280L
MANI

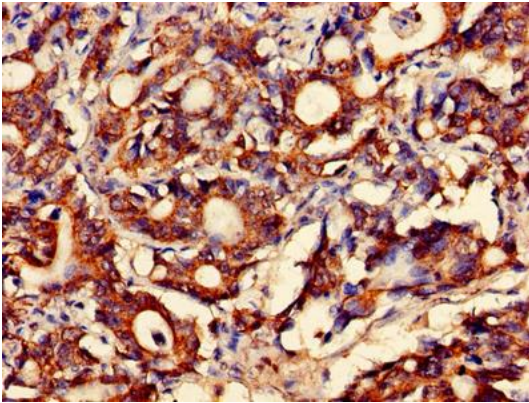
Immunogen:

Recombinant Human Myelin-associated neurite-outgrowth inhibitor protein (43-100AA).

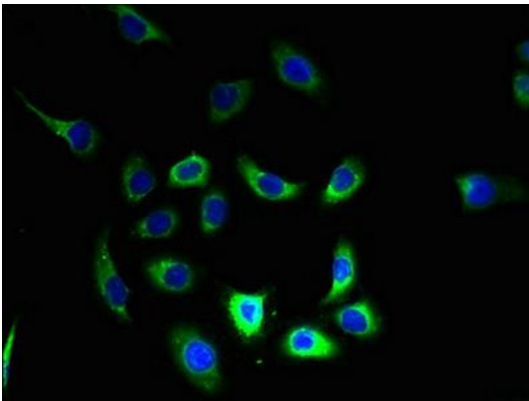
Storage:

Preservative: 0.03% Proclin 300. Constituents: 50% Glycerol, 0.01M PBS, PH 7.4

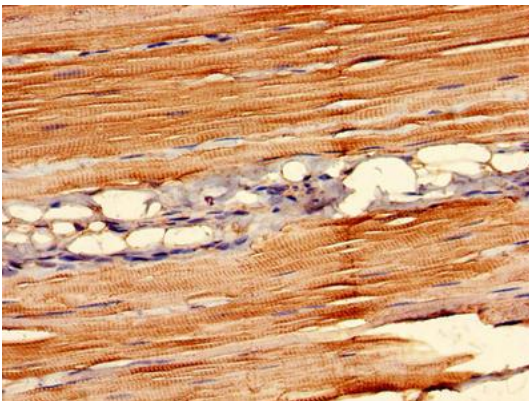
Product Images



Immunohistochemistry of paraffin-embedded human gastric cancer using PACO26657 at dilution of 1:100.



Immunofluorescent analysis of A549 cells using PACO26657 at dilution of 1:100 and Alexa Fluor 488-conjugated AffiniPure Goat Anti-Rabbit IgG(H+L).



Immunohistochemistry of paraffin-embedded human skeletal muscle tissue using PACO26657 at dilution of 1:100.