

# FAM110B Antibody



PACO26645

---

## Product Information

**Size:**

50ug

**Reactivity:**

Human, Mouse

**Source:**

Rabbit

**Isotype:**

IgG

**Applications:**

ELISA, WB, IHC

**Recommended dilutions:**

ELISA:1:2000-1:10000, WB:1:1000-1:5000,  
IHC:1:20-1:200

**Protein Background:**

May be involved in tumor progression.

**Gene ID:**

FAM110B

**Uniprot**

Q8TC76

**Synonyms:**

Protein FAM110B, FAM110B, C8orf72

**Immunogen:**

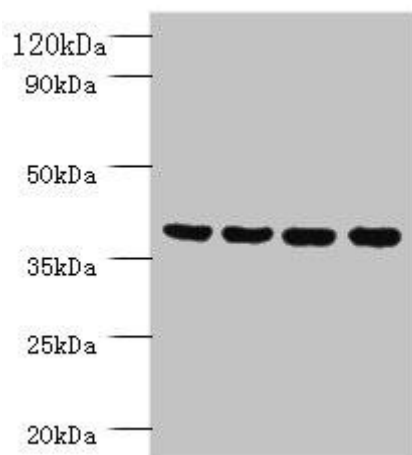
Recombinant Human Protein FAM110B protein (1-370AA).

**Storage:**

Preservative: 0.03% Proclin 300. Constituents: 50% Glycerol, 0.01M PBS, PH 7.4

## Product Images

---



### Western blot

All lanes: Prootein FAM110B antibody at 2 $\mu$ g/ml

Lane 1: Mouse sexual gland tissue

Lane 2: HepG2 whole cell lysate

Lane 3: Mouse spleen tissue

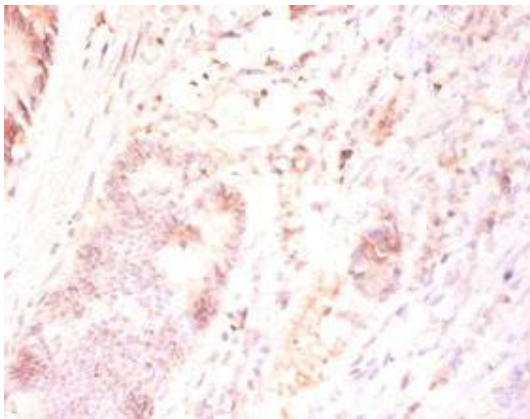
Lane 4: A431 whole cell lysate

Secondary

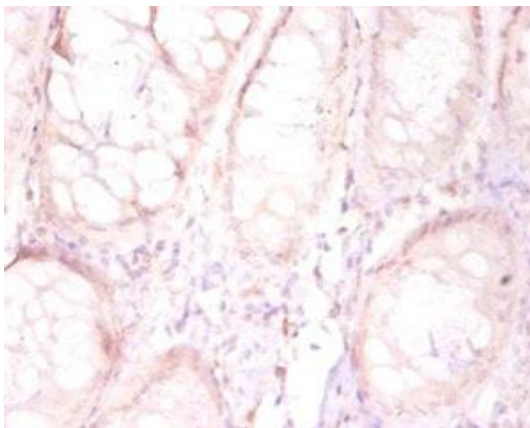
Goat polyclonal to rabbit IgG at 1/10000 dilution

Predicted band size: 41 kDa

Observed band size: 41 kDa



Immunohistochemistry of paraffin-embedded human colon cancer using PACO26645 at dilution of 1:50.



Immunohistochemistry of paraffin-embedded human placenta tissue using PACO26645 at dilution of 1:50.