

PACO26497

---

## Product Information

**Size:**

50ug

**Reactivity:**

Human, Mouse

**Source:**

Rabbit

**Isotype:**

IgG

**Applications:**

ELISA, WB, IHC, IF

**Recommended dilutions:**

ELISA:1:2000-1:10000, WB:1:2000-1:5000,  
IHC:1:20-1:200, IF:1:50-1:200

**Protein Background:**

Canalicular ectonucleoside NTPDase responsible for the main hepatic NTPDase activity. Ectonucleoside NTPDases catalyze the hydrolysis of gamma- and beta-phosphate residues of nucleotides, playing a central role in concentration of extracellular nucleotides. Has activity toward ATP, ADP, UTP and UDP, but not toward AMP.

**Gene ID:**

ENTPD8

**Uniprot**

Q5MY95

**Synonyms:**

Ectonucleoside triphosphate diphosphohydrolase 8 (E-NTPDase 8) (NTPDase 8) (NTPDase8) (EC 3.6.1.5), ENTPD8

**Immunogen:**

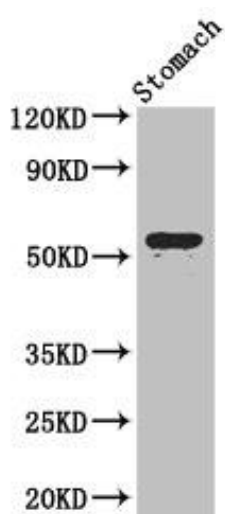
Recombinant Human Ectonucleoside triphosphate diphosphohydrolase 8 protein (30-434AA).

**Storage:**

Preservative: 0.03% Proclin 300. Constituents: 50% Glycerol, 0.01M PBS, PH 7.4

## Product Images

---



### Western Blot

Positive WB detected in: Mouse stomach tissue

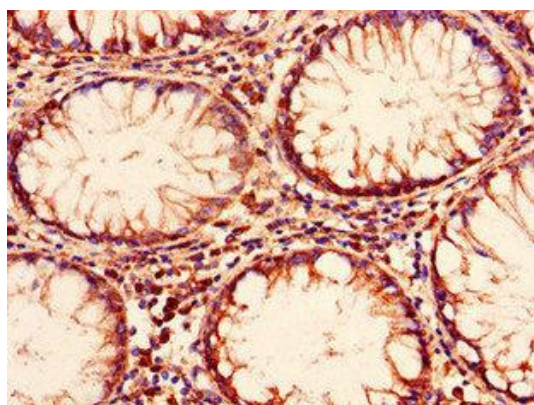
All lanes: ENTPD8 antibody at 2 $\mu$ g/ml

Secondary

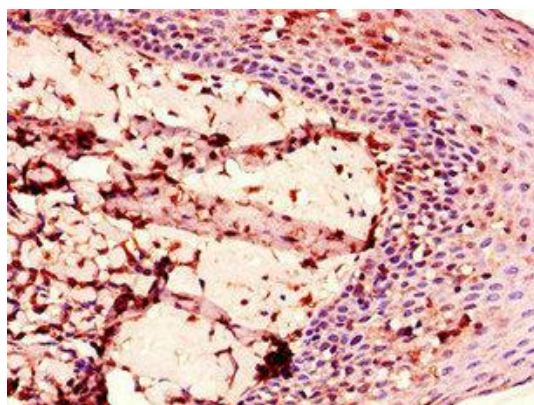
Goat polyclonal to rabbit IgG at 1/50000 dilution

Predicted band size: 54, 50 kDa

Observed band size: 54 kDa



Immunohistochemistry of paraffin-embedded human colon cancer using PACO26497 at dilution of 1:100.



Immunohistochemistry of paraffin-embedded human tonsil tissue using PACO26497 at dilution of 1:100.