

CELA3A Antibody



PACO26445

Product Information

Size:

50ug

Reactivity:

Human, Mouse

Source:

Rabbit

Isotype:

IgG

Applications:

ELISA, WB

Recommended dilutions:

ELISA:1:2000-1:10000, WB:1:1000-1:5000

Protein Background:

Efficient protease with alanine specificity but only little elastolytic activity.

Gene ID:

CELA3A

Uniprot

P09093

Synonyms:

Chymotrypsin-like elastase family member 3A (EC 3.4.21.70) (Elastase IIIA) (Elastase-3A) (Protease E), CELA3A, ELA3 ELA3A

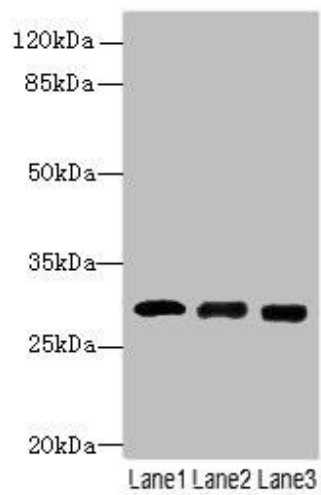
Immunogen:

Recombinant Human Chymotrypsin-like elastase family member 3A protein (29-270AA).

Storage:

Preservative: 0.03% Proclin 300. Constituents: 50% Glycerol, 0.01M PBS, PH 7.4

Product Images



Western blot

All lanes: CELA3A antibody at 14 μ g/ml

Lane 1: Mouse heart tissue

Lane 2: Mouse skeletal muscle tissue

Lane 3: Jurkat whole cell lysate

Secondary

Goat polyclonal to rabbit IgG at 1/10000 dilution

Predicted band size: 30 kDa

Observed band size: 30 kDa