

Acta1 Antibody



PACO26417

Product Information

Size:

50ug

Reactivity:

Mouse, Rat, Zebrafish

Source:

Rabbit

Isotype:

IgG

Applications:

ELISA, WB

Recommended dilutions:

ELISA:1:2000-1:10000, WB:1:1000-1:5000

Protein Background:

Gene ID:

Acta1

Uniprot

P68134

Synonyms:

Actin, alpha skeletal muscle (Alpha-actin-1) [Cleaved into: Actin, alpha skeletal muscle, intermediate form], Acta1, Acta

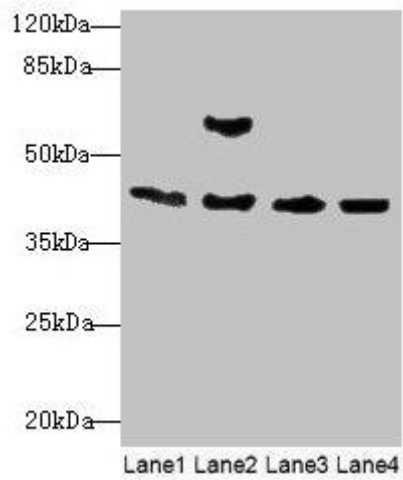
Immunogen:

Mouse Actin, α skeletal muscle (Native Protein).

Storage:

Preservative: 0.03% Proclin 300. Constituents: 50% Glycerol, 0.01M PBS, PH 7.4

Product Images



Western blot

All lanes: Acta1 antibody at 2 μ g/ml

Lane 1: Mouse brain tissue

Lane 2: Mouse lung tissue

Lane 3: Rat muscle tissue

Lane 4: Zebrafish lysate

Secondary

Goat polyclonal to rabbit IgG at 1/10000 dilution

Predicted band size: 43 kDa

Observed band size: 43 kDa

.