

DLEU1 Antibody



PACO26245

Product Information

Size:

50ug

Reactivity:

Human

Source:

Rabbit

Isotype:

IgG

Applications:

ELISA, IHC, IF

Recommended dilutions:

ELISA:1:2000-1:10000, IHC:1:20-1:200,
IF:1:50-1:200

Protein Background:

May act as a tumor suppressor.

Gene ID:

DLEU1

Uniprot

O43261

Synonyms:

Leukemia-associated protein 1 (Deleted in lymphocytic leukemia 1) (HBV X-transactivated gene 6 protein) (HBV XAg-transactivated protein 6), DLEU1, LEU1 XTP6

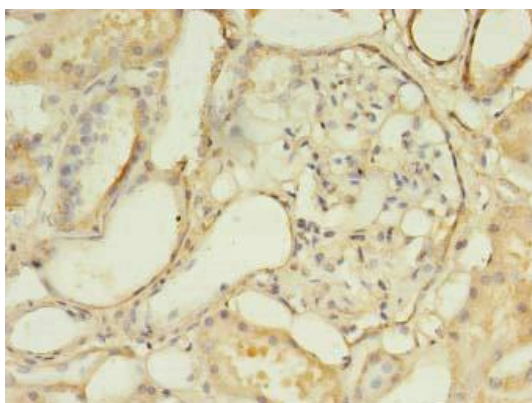
Immunogen:

Recombinant Human Leukemia-associated protein 1 protein (1-78AA).

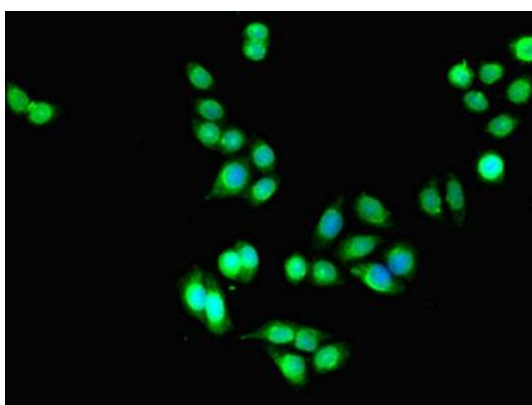
Storage:

Preservative: 0.03% Proclin 300. Constituents: 50% Glycerol, 0.01M PBS, PH 7.4

Product Images



Immunohistochemistry of paraffin-embedded human kidney tissue using PACO26245 at dilution of 1:100.



Immunofluorescent analysis of PC-3 cells using PACO26245 at dilution of 1:100 and Alexa Fluor 488-conjugated AffiniPure Goat Anti-Rabbit IgG(H+L).