

Product Information

Size:

50ug

Reactivity:

Human

Source:

Rabbit

Isotype:

IgG

Applications:

ELISA, IHC

Recommended dilutions:

ELISA:1:2000-1:10000, IHC:1:200-1:500

Protein Background:

DCD-1 displays antimicrobial activity thereby limiting skin infection by potential pathogens in the first few hours after bacterial colonization. Highly effective against E.coli, E. faecalis, S. aureus and C. albicans. Optimal pH and salt concentration resemble the conditions in sweat. Also exhibits proteolytic activity. Survival-promoting peptide promotes survival of neurons and displays phosphatase activity. It may bind IgG.

Gene ID:

DCD

Uniprot

P81605

Synonyms:

Dermcidin (EC 3.4. -. -) (Preproteolysin) [Cleaved into: Survival-promoting peptide; DCD-1], DCD, AIDD DSEP

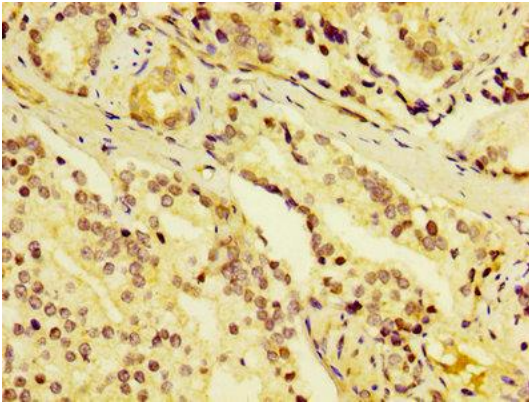
Immunogen:

Recombinant Human Dermcidin protein (20-110AA).

Storage:

Preservative: 0.03% Proclin 300. Constituents: 50% Glycerol, 0.01M PBS, PH 7.4

Product Images



IHC image of PACO26149 diluted at 1:400 and staining in paraffin-embedded human prostate cancer performed on a Leica Bond™ system. After dewaxing and hydration, antigen retrieval was mediated by high pressure in a citrate buffer (pH 6.0). Section was blocked with 10% normal goat serum 30min at RT. Then primary antibody (1% BSA) was incubated at 4°C overnight. The primary is detected by a biotinylated secondary antibody and visualized using an HRP conjugated SP system.