

DAPL1 Antibody



PACO26133

Product Information

Size:

50ug

Reactivity:

Human

Source:

Rabbit

Isotype:

IgG

Applications:

ELISA, IHC

Recommended dilutions:

ELISA:1:2000-1:10000, IHC:1:20-1:200

Protein Background:

May play a role in the early stages of epithelial differentiation or in apoptosis.

Gene ID:

DAPL1

Uniprot

A0PJW8

Synonyms:

Death-associated protein-like 1 (Early epithelial differentiation-associated protein), DAPL1, EEDA

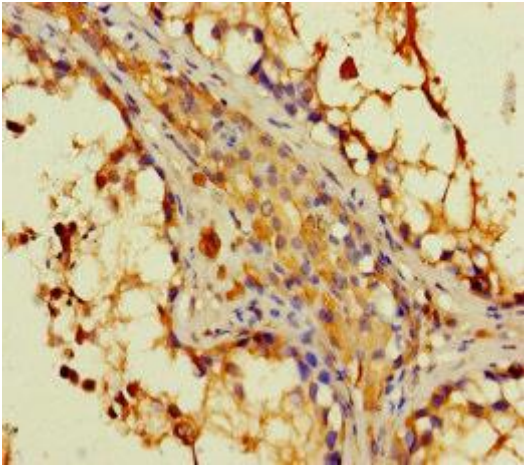
Immunogen:

Recombinant Human Death-associated protein-like 1 protein (1-107AA).

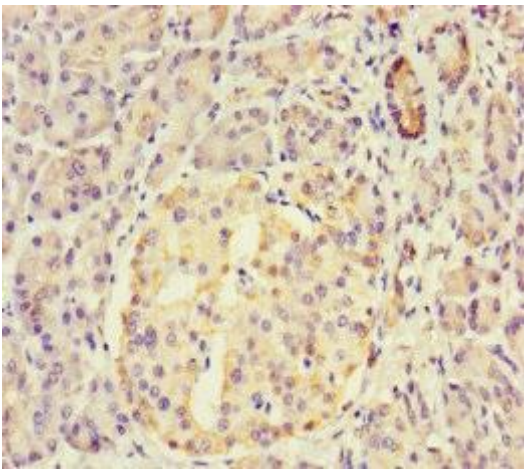
Storage:

Preservative: 0.03% Proclin 300. Constituents: 50% Glycerol, 0.01M PBS, PH 7.4

Product Images



Immunohistochemistry of paraffin-embedded human testis tissue using PACO26133 at dilution of 1:100.



Immunohistochemistry of paraffin-embedded human pancreatic tissue using PACO26133 at dilution of 1:100.