

CSHL1 Antibody



PACO25989

Product Information

Size:

50ug

Reactivity:

Human

Source:

Rabbit

Isotype:

IgG

Applications:

ELISA, WB, IHC

Recommended dilutions:

ELISA:1:2000-1:10000, WB:1:500-1:5000,
IHC:1:20-1:200

Protein Background:

May be a novel gestational hormone required to compensate for absence of other members of the GH/CS cluster during gestation.

Gene ID:

CSHL1

Uniprot

Q14406

Synonyms:

Chorionic somatomammotropin hormone-like 1 (Chorionic somatomammotropin-like) (Lactogen-like), CSHL1, CSHP1 CSL

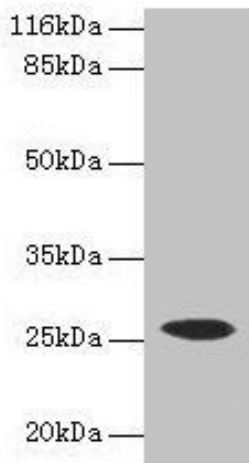
Immunogen:

Recombinant Human Chorionic somatomammotropin hormone-like 1 protein (1-128AA).

Storage:

Preservative: 0.03% Proclin 300. Constituents: 50% Glycerol, 0.01M PBS, PH 7.4

Product Images



Western blot

All lanes: CSHL1 antibody at 2 μ g/ml + Human placenta tissue

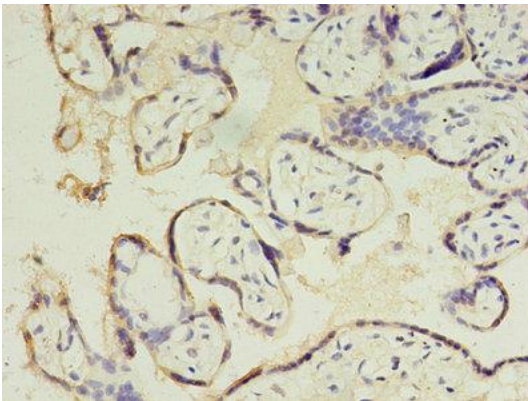
Secondary

Goat polyclonal to rabbit IgG at 1/10000 dilution

Predicted band size: 26, 23, 16, 15 kDa

Observed band size: 26 kDa

.



Immunohistochemistry of paraffin-embedded human placenta tissue using PACO25989 at dilution of 1:100.