

PACO25981

Product Information

Size:

50ug

Reactivity:

Human

Source:

Rabbit

Isotype:

IgG

Applications:

ELISA, IHC, IF

Recommended dilutions:

ELISA:1:2000-1:10000, IHC:1:20-1:200,
IF:1:200-1:500

Protein Background:

Low affinity receptor for granulocyte-macrophage colony-stimulating factor. Transduces a signal that results in the proliferation, differentiation, and functional activation of hematopoietic cells.

Gene ID:

CSF2RA

Uniprot

P15509

Synonyms:

Granulocyte-macrophage colony-stimulating factor receptor subunit alpha (GM-CSF-R-alpha) (GMCSFR-alpha) (GMR-alpha) (CDw116) (CD antigen CD116), CSF2RA, CSF2R, CSF2RY

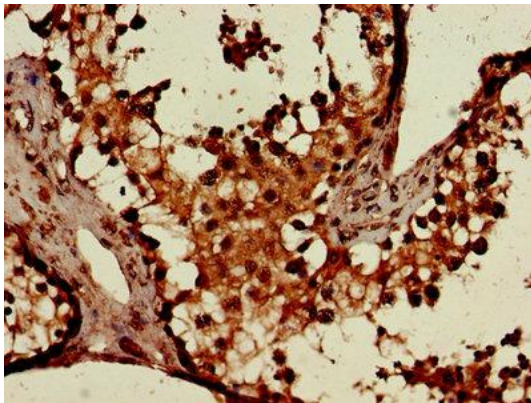
Immunogen:

Recombinant Human Granulocyte-macrophage colony-stimulating factor receptor subunit α ; protein (23-320AA).

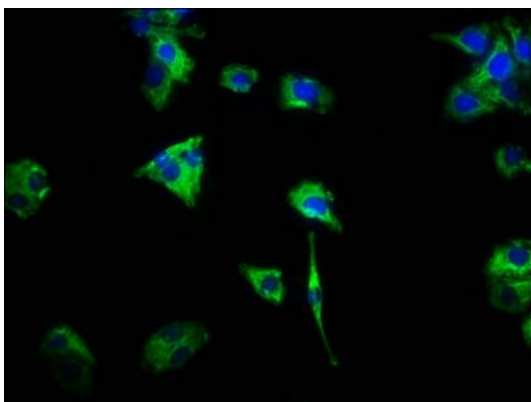
Storage:

Preservative: 0.03% Proclin 300. Constituents: 50% Glycerol, 0.01M PBS, PH 7.4

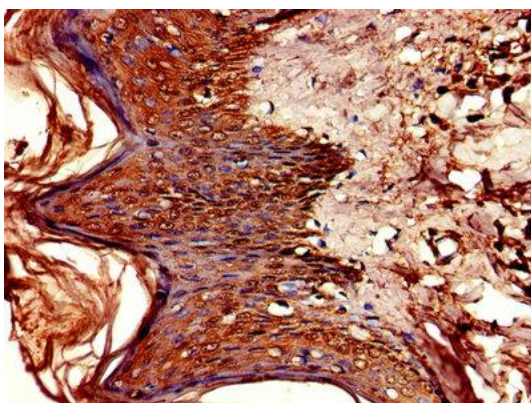
Product Images



Immunohistochemistry of paraffin-embedded human testis tissue using PACO25981 at dilution of 1:100.



Immunofluorescence staining of HepG2 cells with PACO25981 at 1:466, counter-stained with DAPI. The cells were fixed in 4% formaldehyde, permeabilized using 0.2% Triton X-100 and blocked in 10% normal Goat Serum. The cells were then incubated with the antibody overnight at 4°C. The secondary antibody was Alexa Fluor 488-conjugated AffiniPure Goat Anti-Rabbit IgG(H+L).



Immunohistochemistry of paraffin-embedded human skin tissue using PACO25981 at dilution of 1:100.