

CSAG1 Antibody



PACO25973

Product Information

Size:

50ug

Reactivity:

Human

Source:

Rabbit

Isotype:

IgG

Applications:

ELISA, IHC

Recommended dilutions:

ELISA:1:2000-1:10000, IHC:1:20-1:200

Protein Background:

Gene ID:

CSAG1

Uniprot

Q6PB30

Synonyms:

Putative chondrosarcoma-associated gene 1 protein (Cancer/testis antigen 24.1) (CT24.1) (Cancer/testis antigen CSAGE), CSAG1, CSAGE

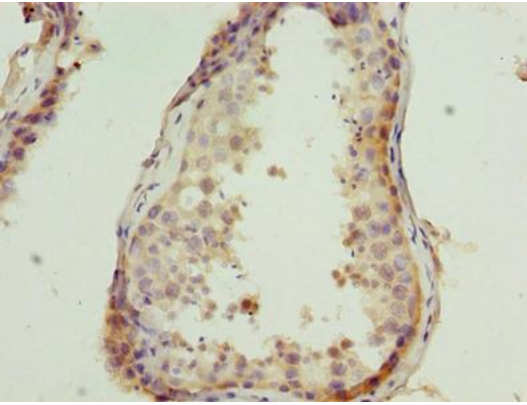
Immunogen:

Recombinant Human Putative chondrosarcoma-associated gene 1 protein (20-78AA).

Storage:

Preservative: 0.03% Proclin 300. Constituents: 50% Glycerol, 0.01M PBS, PH 7.4

Product Images



Immunohistochemistry of paraffin-embedded human testis tissue using PACO25973 at dilution of 1:100.