

PACO25961

Product Information

Size:

50ug

Reactivity:

Human

Source:

Rabbit

Isotype:

IgG

Applications:

ELISA, WB

Recommended dilutions:

ELISA:1:2000-1:10000, WB:1:500-1:2000

Protein Background:

cytosol, NADP binding, NADPH: quinone reductase activity, quinone metabolic process.

Gene ID:

CRYZL1

Uniprot

O95825

Synonyms:

Quinone oxidoreductase-like protein 1 (EC 1. -. -. -) (Protein 4P11) (Quinone oxidoreductase homolog 1) (QOH-1) (Zeta-crystallin homolog), CRYZL1, 4P11

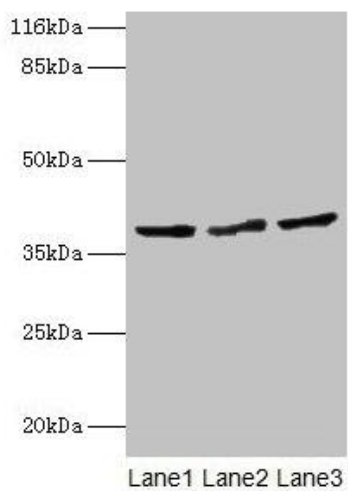
Immunogen:

Recombinant Human Quinone oxidoreductase-like protein 1 protein (1-87AA).

Storage:

Preservative: 0.03% Proclin 300. Constituents: 50% Glycerol, 0.01M PBS, PH 7.4

Product Images



Western blot

All lanes: CRYZL1 antibody at 12 μ g/ml

Lane 1: Hela whole cell lysate

Lane 2: HepG2 whole cell lysate

Lane 3: Jurkat whole cell lysate

Secondary

Goat polyclonal to rabbit IgG at 1/10000 dilution

Predicted band size: 39, 22 kDa

Observed band size: 39 kDa