

CRHR1 Antibody



PACO25929

Product Information

Size:

50ug

Reactivity:

Human

Source:

Rabbit

Isotype:

IgG

Applications:

ELISA, WB, IHC, IF

Recommended dilutions:

ELISA:1:2000-1:10000, WB:1:500-1:5000,
IHC:1:20-1:200, IF:1:50-1:200

Protein Background:**Gene ID:**

CRHR1

Uniprot

P34998

Synonyms:

Corticotropin-releasing factor receptor 1 (CRF-R-1) (CRF-R1) (CRFR-1) (Corticotropin-releasing hormone receptor 1) (CRH-R-1) (CRH-R1), CRHR1, CRFR CRFR1 CRHR

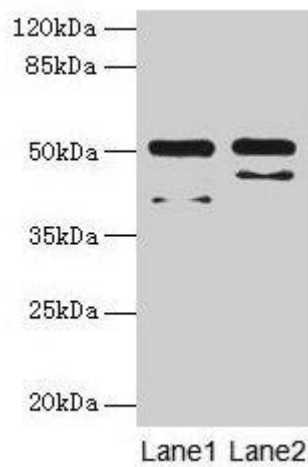
Immunogen:

Recombinant Human Corticotropin-releasing factor receptor 1 protein (24-121AA).

Storage:

Preservative: 0.03% Proclin 300. Constituents: 50% Glycerol, 0.01M PBS, PH 7.4

Product Images



Western blot

All lanes: CRHR1 antibody at 16 μ g/ml

Lane 1: Hela whole cell lysate

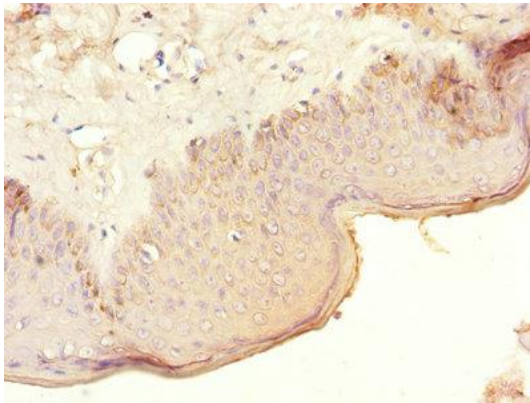
Lane 2: HL60 whole cell lysate

Secondary

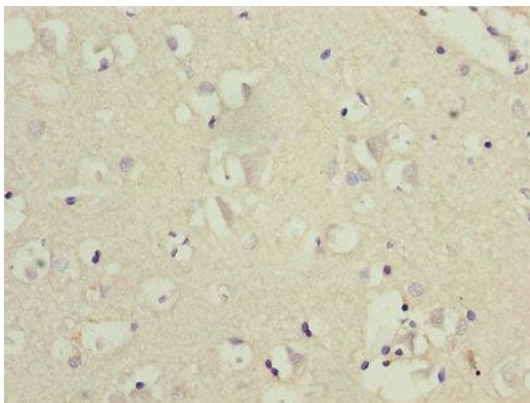
Goat polyclonal to rabbit IgG at 1/10000 dilution

Predicted band size: 51, 48, 44, 47, 29 kDa

Observed band size: 51 kDa



Immunohistochemistry of paraffin-embedded human skin tissue using PACO25929 at dilution of 1:100.



Immunohistochemistry of paraffin-embedded human brain tissue using PACO25929 at dilution of 1:100.