

Product Information

Size:

50ug

Reactivity:

Human

Source:

Rabbit

Isotype:

IgG

Applications:

ELISA, WB, IHC

Recommended dilutions:

ELISA:1:2000-1:10000, WB:1:500-1:2000,
IHC:1:20-1:200

Protein Background:

extracellular region, extracellular space, vacuole, carboxypeptidase activity, metalloproteinase activity, zinc ion binding, protein catabolic process in the vacuole, proteolysis.

Gene ID:

CPA2

Uniprot

P48052

Synonyms:

Carboxypeptidase A2 (EC 3.4.17.15), CPA2

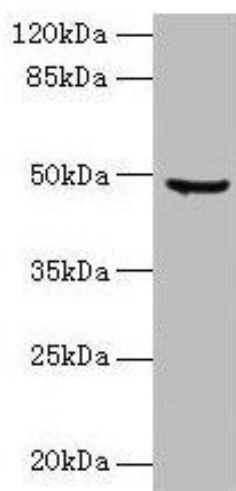
Immunogen:

Recombinant Human Carboxypeptidase A2 protein (115-419AA).

Storage:

Preservative: 0.03% Proclin 300. Constituents: 50% Glycerol, 0.01M PBS, PH 7.4

Product Images



Western blot

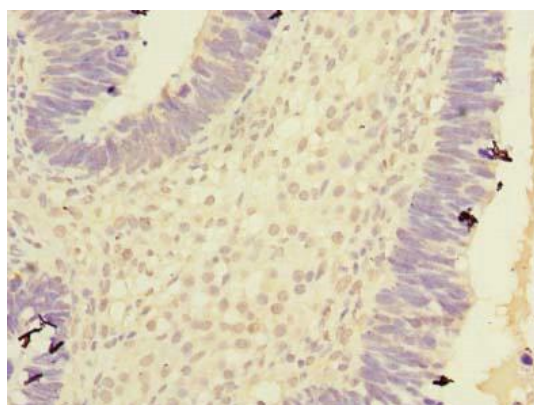
All lanes: CPA2 antibody at 1.5 μ g/ml + HeLa whole cell lysate

Secondary

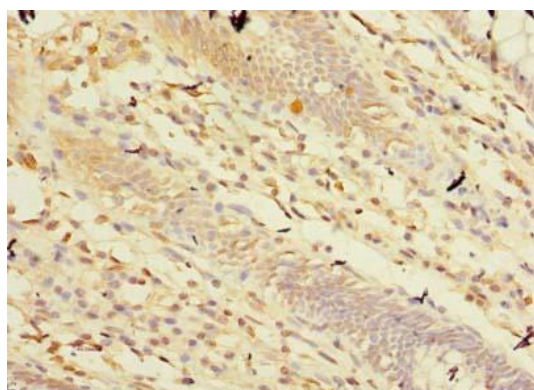
Goat polyclonal to rabbit IgG at 1/10000 dilution

Predicted band size: 48 kDa

Observed band size: 48 kDa



Immunohistochemistry of paraffin-embedded human ovarian cancer using PACO25893 at dilution of 1:100.



Immunohistochemistry of paraffin-embedded human colon cancer using PACO25893 at dilution of 1:100.