

PACO25861

Product Information

Size:

50ug

Reactivity:

Human

Source:

Rabbit

Isotype:

IgG

Applications:

ELISA, IHC

Recommended dilutions:

ELISA:1:2000-1:10000, IHC:1:20-1:200

Protein Background:

Type IV collagen is the major structural component of glomerular basement membranes (GBM), forming a 'chicken-wire' meshwork together with laminins, proteoglycans and entactin/nidogen.

Gene ID:

COL4A3

Uniprot

Q01955

Synonyms:

Collagen alpha-3(IV) chain (Goodpasture antigen) [Cleaved into: Tumstatin], COL4A3

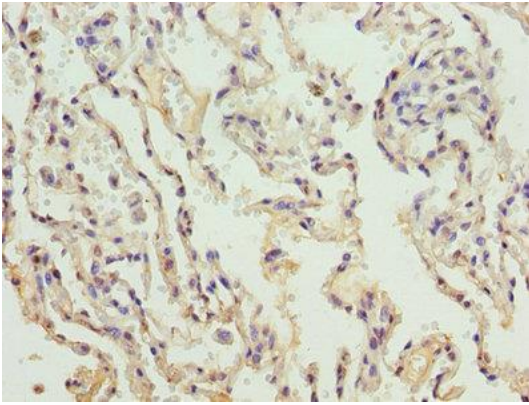
Immunogen:

Recombinant Human Collagen alpha-3(IV) chain protein (1427-1668AA).

Storage:

Preservative: 0.03% Proclin 300. Constituents: 50% Glycerol, 0.01M PBS, PH 7.4

Product Images



Immunohistochemistry of paraffin-embedded human lung tissue using PACO25861 at dilution of 1:100.