

CNTFR Antibody



PACO25841

Product Information

Size:

50ug

Reactivity:

Human

Source:

Rabbit

Isotype:

IgG

Applications:

ELISA, WB, IHC, IF

Recommended dilutions:

ELISA:1:2000-1:10000, WB:1:500-1:5000,
IHC:1:20-1:200, IF:1:50-1:200

Protein Background:

Binds to CNTF. The alpha subunit provides the receptor specificity.

Gene ID:

CNTFR

Uniprot

P26992

Synonyms:

Ciliary neurotrophic factor receptor subunit alpha (CNTF receptor subunit alpha)
(CNTFR-alpha), CNTFR

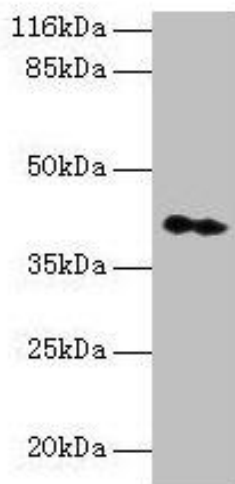
Immunogen:

Recombinant Human Ciliary neurotrophic factor receptor subunit α protein (106-342AA).

Storage:

Preservative: 0.03% Proclin 300. Constituents: 50% Glycerol, 0.01M PBS, PH 7.4

Product Images



Western blot

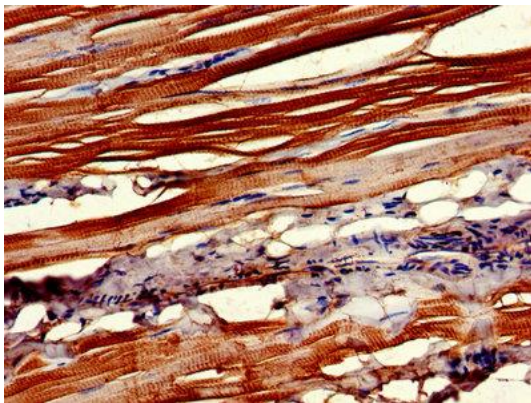
All lanes: CNTFR antibody at 2 μ g/ml + HeLa whole cell lysate

Secondary

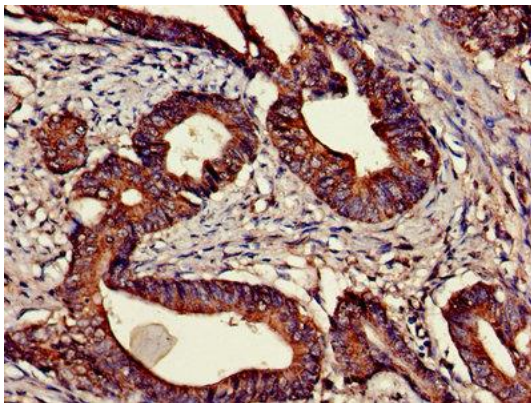
Goat polyclonal to rabbit IgG at 1/10000 dilution

Predicted band size: 41 kDa

Observed band size: 41 kDa



Immunohistochemistry of paraffin-embedded human skeletal muscle tissue using PACO25841 at dilution of 1:100.



Immunohistochemistry of paraffin-embedded human colon cancer using PACO25841 at dilution of 1:100.