

CMC1 Antibody



PACO25825

Product Information

Size:

50ug

Reactivity:

Human

Source:

Rabbit

Isotype:

IgG

Applications:

ELISA, IHC

Recommended dilutions:

ELISA:1:2000-1:10000, IHC:1:20-1:200

Protein Background:

Required for mitochondrial cytochrome c oxidase (COX) assembly and respiration.

Gene ID:

CMC1

Uniprot

Q7Z7K0

Synonyms:

COX assembly mitochondrial protein homolog (Cmc1p), CMC1, C3orf68

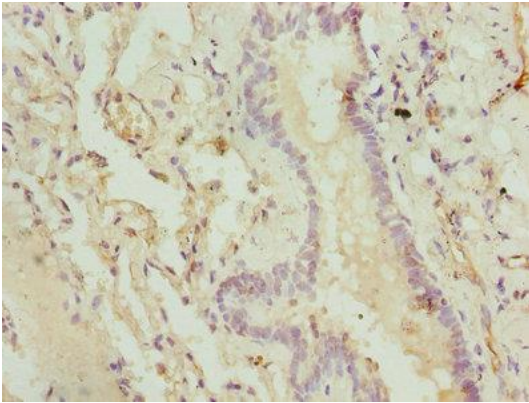
Immunogen:

Recombinant Human COX assembly mitochondrial protein homolog protein (1-106AA).

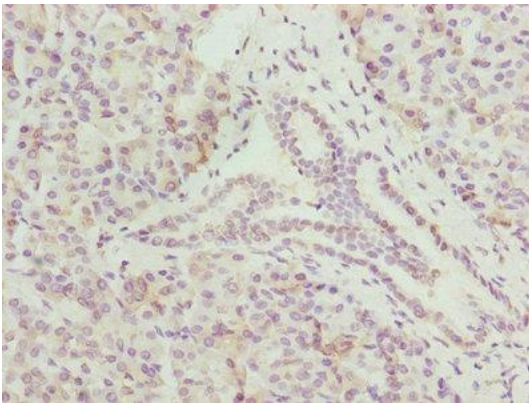
Storage:

Preservative: 0.03% Proclin 300. Constituents: 50% Glycerol, 0.01M PBS, PH 7.4

Product Images



Immunohistochemistry of paraffin-embedded human lung tissue using PACO25825 at dilution of 1:100.



Immunohistochemistry of paraffin-embedded human pancreatic tissue using PACO25825 at dilution of 1:100.