

## Product Information

**Size:**

50ug

**Reactivity:**

Human

**Source:**

Rabbit

**Isotype:**

IgG

**Applications:**

ELISA, WB, IHC, IF

**Recommended dilutions:**

ELISA:1:2000-1:10000, WB:1:500-1:5000,  
IHC:1:20-1:200, IF:1:50-1:200

**Protein Background:**

Can insert into membranes and form chloride ion channels. Channel activity depends on the pH. Membrane insertion seems to be redox-regulated and may occur only under oxidizing conditions. Modulates the activity of RYR2 and inhibits calcium influx.

**Gene ID:**

CLIC2

**Uniprot**

O15247

**Synonyms:**

Chloride intracellular channel protein 2 (XAP121), CLIC2

**Immunogen:**

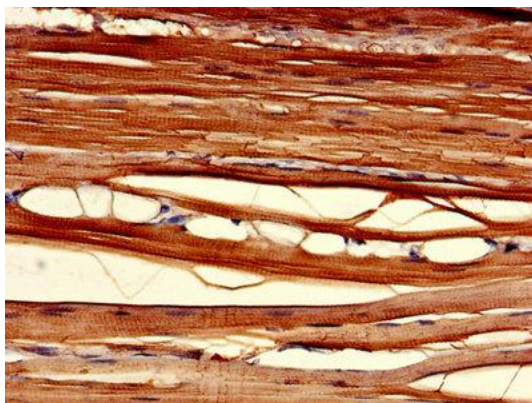
Recombinant Human Chloride intracellular channel protein 2 protein (53-247AA).

**Storage:**

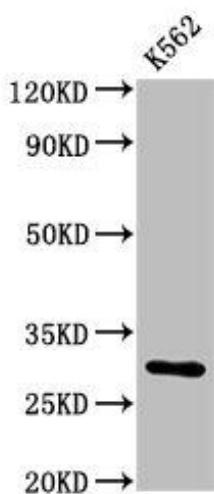
Preservative: 0.03% Proclin 300. Constituents: 50% Glycerol, 0.01M PBS, PH 7.4

## Product Images

---



Immunohistochemistry of paraffin-embedded human skeletal muscle tissue using PACO25805 at dilution of 1:100.



### Western Blot

Positive WB detected in: K562 whole cell lysate

All lanes: CLIC2 antibody at 2µg/ml

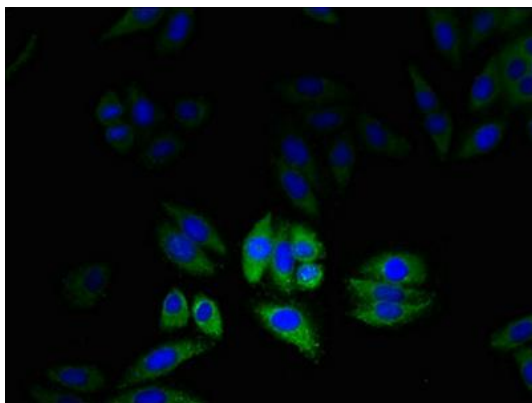
Secondary

Goat polyclonal to rabbit IgG at 1/50000 dilution

Predicted band size: 29 kDa

Observed band size: 29 kDa

.



Immunofluorescent analysis of HepG2 cells using PACO25805 at dilution of 1:100 and Alexa Fluor 488-conjugated AffiniPure Goat Anti-Rabbit IgG(H+L).