

# CLEC3A Antibody



PACO25797

---

## Product Information

**Size:**

50ug

**Reactivity:**

Human, Mouse

**Source:**

Rabbit

**Isotype:**

IgG

**Applications:**

ELISA, WB, IHC

**Recommended dilutions:**

ELISA:1:2000-1:10000, WB:1:500-1:5000,  
IHC:1:20-1:200

**Protein Background:**

Promotes cell adhesion to laminin-332 and fibronectin.

**Gene ID:**

CLEC3A

**Uniprot**

O75596

**Synonyms:**

C-type lectin domain family 3 member A (C-type lectin superfamily member 1)  
(Cartilage-derived C-type lectin), CLEC3A, CLECSF1

**Immunogen:**

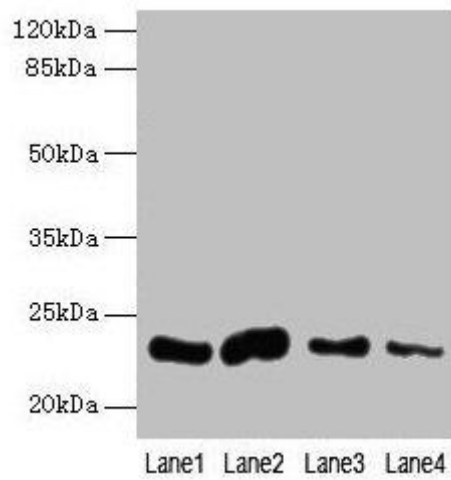
Recombinant Human C-type lectin domain family 3 member A protein (23-197AA).

**Storage:**

Preservative: 0.03% Proclin 300. Constituents: 50% Glycerol, 0.01M PBS, PH 7.4

## Product Images

---



### Western blot

All lanes: CLEC3A antibody at 0.4 $\mu$ g/ml

Lane 1: Mouse liver tissue

Lane 2: Mouse kidney tissue

Lane 3: Mouse brain tissue

Lane 4: Mouse lung tissue

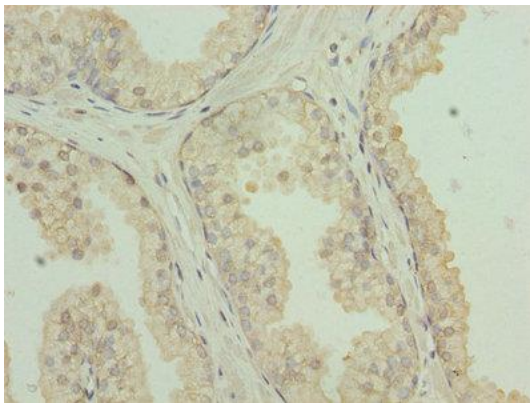
Secondary

Goat polyclonal to rabbit IgG at 1/10000 dilution

Predicted band size: 23 kDa

Observed band size: 23 kDa

.



Immunohistochemistry of paraffin-embedded human prostate cancer using PACO25797 at dilution of 1:100.