

# CLEC18A Antibody



PACO25793

---

## Product Information

**Size:**

50ug

**Reactivity:**

Human, Mouse

**Source:**

Rabbit

**Isotype:**

IgG

**Applications:**

ELISA, WB, IHC

**Recommended dilutions:**

ELISA:1:2000-1:10000, WB:1:1000-1:5000,  
IHC:1:20-1:200

**Protein Background:****Gene ID:**

CLEC18A

**Uniprot**

A5D8T8

**Synonyms:**

C-type lectin domain family 18 member A (Mannose receptor-like protein 2), CLEC18A, MRLP2

**Immunogen:**

Recombinant Human C-type lectin domain family 18 member A protein (27-446AA).

**Storage:**

Preservative: 0.03% Proclin 300. Constituents: 50% Glycerol, 0.01M PBS, PH 7.4

## Product Images

---



### Western blot

All lanes: CLEC18A antibody at 2 $\mu$ g/ml + Mouse stomach tissue

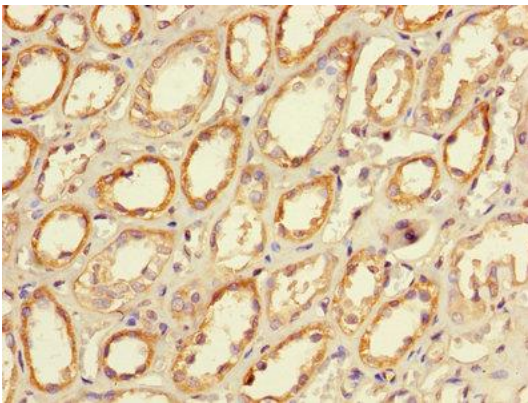
Secondary

Goat polyclonal to rabbit IgG at 1/10000 dilution

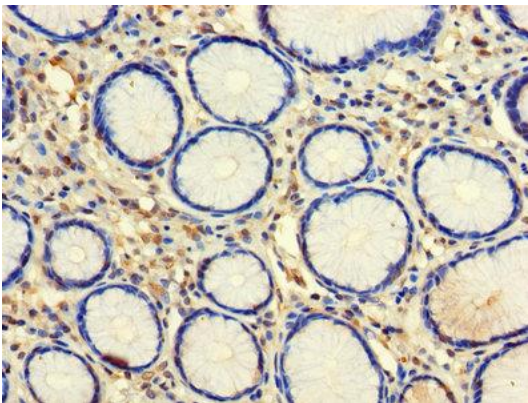
Predicted band size: 50, 12 kDa

Observed band size: 50 kDa

.



Immunohistochemistry of paraffin-embedded human kidney tissue using PACO25793 at dilution of 1:100.



Immunohistochemistry of paraffin-embedded human stomach tissue using PACO25793 at dilution of 1:100.