

PACO25789

Product Information

Size:

50ug

Reactivity:

Human

Source:

Rabbit

Isotype:

IgG

Applications:

ELISA, WB, IF

Recommended dilutions:

ELISA:1:2000-1:10000, WB:1:1000-1:5000,
IF:1:50-1:200

Protein Background:

Plays a major role in tight junction-specific obliteration of the intercellular space, through calcium-independent cell-adhesion activity.

Gene ID:

CLDN20

Uniprot

P56880

Synonyms:

Claudin-20, CLDN20

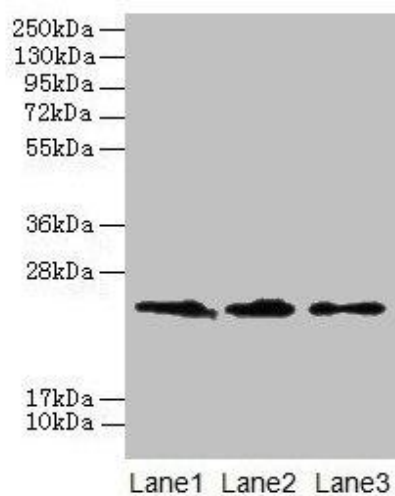
Immunogen:

Recombinant Human Claudin-20 protein (29-81AA).

Storage:

Preservative: 0.03% Proclin 300. Constituents: 50% Glycerol, 0.01M PBS, PH 7.4

Product Images



Western blot

All lanes: CLDN20 antibody at 4 μ g/ml

Lane 1: A549 whole cell lysate

Lane 2: HepG2 whole cell lysate

Lane 3: PC-3 whole cell lysate

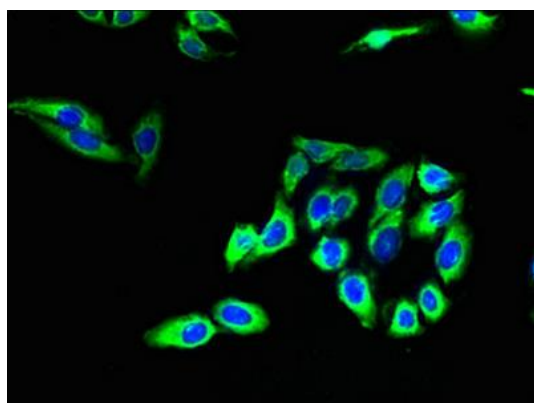
Secondary

Goat polyclonal to rabbit IgG at 1/10000 dilution

Predicted band size: 24 kDa

Observed band size: 24 kDa

.



Immunofluorescent analysis of HepG2 cells using PACO25789 at dilution of 1:100 and Alexa Fluor 488-conjugated AffiniPure Goat Anti-Rabbit IgG(H+L).