

Chrna1 Antibody



PACO25757

Product Information

Size:

50ug

Reactivity:

Mouse, Human

Source:

Rabbit

Isotype:

IgG

Applications:

ELISA, WB

Recommended dilutions:

ELISA:1:2000-1:10000, WB:1:1000-1:5000

Protein Background:

After binding acetylcholine, the AChR responds by an extensive change in conformation that affects all subunits and leads to opening of an ion-conducting channel across the plasma membrane.

Gene ID:

Chrna1

Uniprot

P04756

Synonyms:

Acetylcholine receptor subunit alpha, Chrna1, Acra

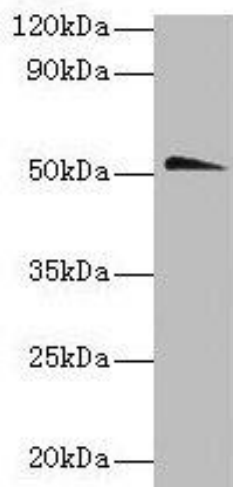
Immunogen:

Recombinant Mouse Acetylcholine receptor subunit α protein (21-230AA).

Storage:

Preservative: 0.03% Proclin 300. Constituents: 50% Glycerol, 0.01M PBS, PH 7.4

Product Images



Western blot

All lanes: Chrna1 antibody at 2 μ g/ml + HeLa whole lysate

Secondary

Goat polyclonal to rabbit IgG at 1/10000 dilution

Predicted band size: 52 kDa

Observed band size: 52 kDa