

Cela2a Antibody



PACO25713

Product Information

Size:

50ug

Reactivity:

Mouse

Source:

Rabbit

Isotype:

IgG

Applications:

ELISA, WB

Recommended dilutions:

ELISA:1:2000-1:10000, WB:1:1000-1:5000

Protein Background:

Acts upon elastin.

Gene ID:

Cela2a

Uniprot

P05208

Synonyms:

Chymotrypsin-like elastase family member 2A (EC 3.4.21.71) (Elastase-2) (Elastase-2A), Cela2a, Ela-2 Ela2 Ela2a

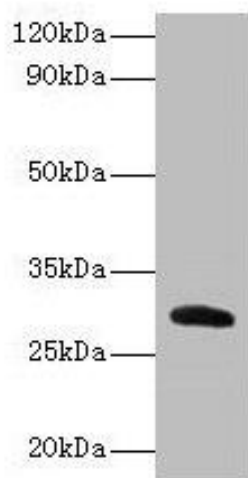
Immunogen:

Recombinant Mouse Chymotrypsin-like elastase family member 2A protein (31-271AA).

Storage:

Preservative: 0.03% Proclin 300. Constituents: 50% Glycerol, 0.01M PBS, PH 7.4

Product Images



Western blot

All lanes: Celsr2a antibody at 2 μ g/ml + Recombinant Chymotrypsin-like elastase family member 2A protein 0.1 μ g

Secondary

Goat polyclonal to rabbit IgG at 1/15000 dilution

Predicted band size: 29 kDa

Observed band size: 29 kDa