

# CEACAM7 Antibody



PACO25709

---

## Product Information

**Size:**

50ug

**Reactivity:**

Human

**Source:**

Rabbit

**Isotype:**

IgG

**Applications:**

ELISA, IHC

**Recommended dilutions:**

ELISA:1:2000-1:10000, IHC:1:20-1:200

**Protein Background:**

integral component of membrane, plasma membrane.

**Gene ID:**

CEACAM7

**Uniprot**

Q14002

**Synonyms:**

Carcinoembryonic antigen-related cell adhesion molecule 7 (Carcinoembryonic antigen CGM2), CEACAM7, CGM2

**Immunogen:**

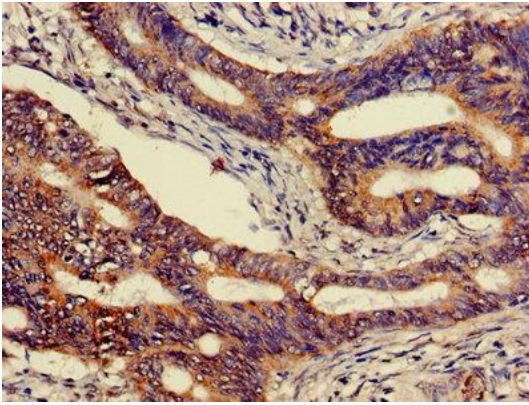
Recombinant Human Carcinoembryonic antigen-related cell adhesion molecule 7 protein (36-242AA).

**Storage:**

Preservative: 0.03% Proclin 300. Constituents: 50% Glycerol, 0.01M PBS, PH 7.4

## Product Images

---



Immunohistochemistry of paraffin-embedded human colon cancer using PACO25709 at dilution of 1:100.