

COX4I1 Antibody



PACO25696

Product Information

Size:

50ug

Reactivity:

Human, Rat, Zebrafish

Source:

Rabbit

Isotype:

IgG

Applications:

ELISA, WB, IHC

Recommended dilutions:

ELISA:1:2000-1:10000, WB:1:1000-1:5000,
IHC:1:20-1:200

Protein Background:

This protein is one of the nuclear-coded polypeptide chains of cytochrome c oxidase, the terminal oxidase in mitochondrial electron transport.

Gene ID:

COX4I1

Uniprot

P13073

Synonyms:

Cytochrome c oxidase subunit 4 isoform 1, mitochondrial (Cytochrome c oxidase polypeptide IV) (Cytochrome c oxidase subunit IV isoform 1) (COX IV-1), COX4I1, COX4

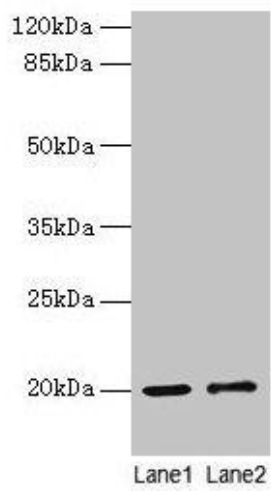
Immunogen:

Recombinant Human Cytochrome c oxidase subunit 4 isoform 1, mitochondrial protein (23-169AA).

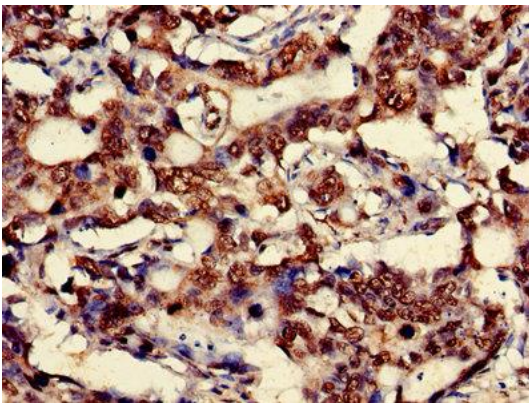
Storage:

Preservative: 0.03% Proclin 300. Constituents: 50% Glycerol, 0.01M PBS, PH 7.4

Product Images



Western blot
All lanes: COX4I1 antibody at 10 μ g/ml
Lane 1: Rat muscle tissue
Lane 2: Zebrafish lysate
Secondary
Goat polyclonal to rabbit IgG at 1/10000 dilution
Predicted band size: 20 kDa
Observed band size: 20 kDa



Immunohistochemistry of paraffin-embedded human gastric cancer using PACO25696 at dilution of 1:100.