

PACO25664

Product Information

Size:

50ug

Reactivity:

Human

Source:

Rabbit

Isotype:

IgG

Applications:

ELISA, IHC

Recommended dilutions:

ELISA:1:2000-1:10000, IHC:1:20-1:200

Protein Background:

Probably involved in the organization of the actin cytoskeleton. May act downstream of CDC42 to induce actin filament assembly leading to cell shape changes. Induces pseudopodia formation in fibroblasts in a CDC42-dependent manner.

Gene ID:

CDC42EP2

Uniprot

O14613

Synonyms:

Cdc42 effector protein 2 (Binder of Rho GTPases 1), CDC42EP2, BORG1 CEP2

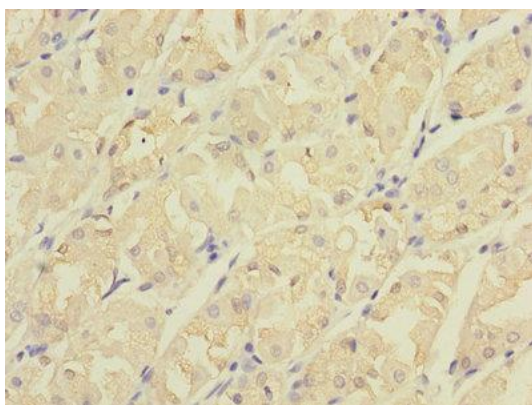
Immunogen:

Recombinant Human Cdc42 effector protein 2 protein (9-210AA).

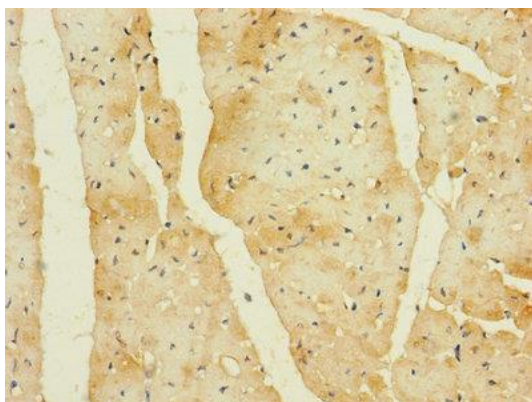
Storage:

Preservative: 0.03% Proclin 300. Constituents: 50% Glycerol, 0.01M PBS, PH 7.4

Product Images



Immunohistochemistry of paraffin-embedded human gastric cancer using PACO25664 at dilution of 1:100.



Immunohistochemistry of paraffin-embedded human heart tissue using PACO25664 at dilution of 1:100.