

BLOC1S1 Antibody



PACO25632

Product Information

Size:

50ug

Reactivity:

Human

Source:

Rabbit

Isotype:

IgG

Applications:

ELISA, WB, IHC, IF

Recommended dilutions:

ELISA:1:2000-1:10000, WB:1:500-1:5000,
IHC:1:20-1:200, IF:1:50-1:200

Protein Background:

Gene ID:

BLOC1S1

Uniprot

P78537

Synonyms:

Biogenesis of lysosome-related organelles complex 1 subunit 1 (BLOC-1 subunit 1) (GCN5-like protein 1) (Protein RT14), BLOC1S1, BLOS1 GCN5L1 RT14

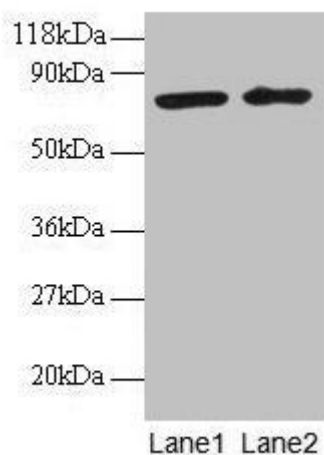
Immunogen:

Recombinant Human Biogenesis of lysosome-related organelles complex 1 subunit 1 protein (1-153AA).

Storage:

Preservative: 0.03% Proclin 300. Constituents: 50% Glycerol, 0.01M PBS, PH 7.4

Product Images



Western blot

All lanes: BLOC1S1 antibody at 2 μ g/ml

Lane 1: EC109 whole cell lysate

Lane 2: 293T whole cell lysate

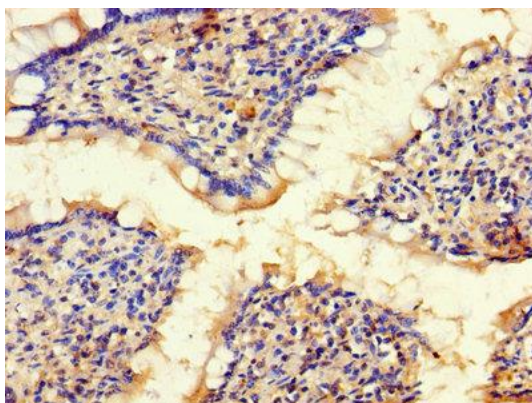
Secondary

Goat polyclonal to rabbit IgG at 1/15000 dilution

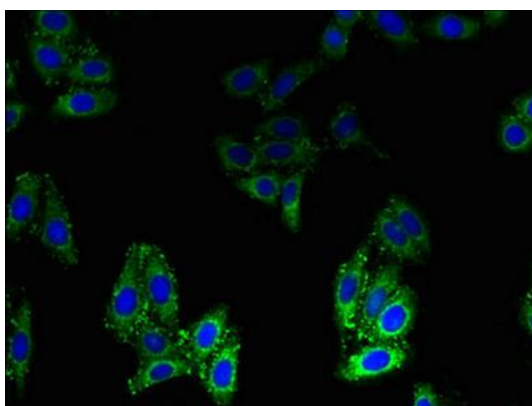
Predicted band size: 18, 15 kDa

Observed band size: 75 kDa

.



Immunohistochemistry of paraffin-embedded human small intestine tissue using PACO25632 at dilution of 1:100.



Immunofluorescent analysis of HepG2 cells using PACO25632 at dilution of 1:100 and Alexa Fluor 488-conjugated AffiniPure Goat Anti-Rabbit IgG(H+L).