

# ERCC6L2 Antibody



PACO25416

---

## Product Information

**Size:**

50ug

**Reactivity:**

Human

**Source:**

Rabbit

**Isotype:**

IgG

**Applications:**

ELISA, IHC

**Recommended dilutions:**

ELISA:1:2000-1:10000, IHC:1:20-1:200

**Protein Background:**

May be involved in early DNA damage response.

**Gene ID:**

ERCC6L2

**Uniprot**

Q5T890

**Synonyms:**

DNA excision repair protein ERCC-6-like 2 (EC 3.6.4. -) (DNA repair and recombination protein RAD26-like), ERCC6L2, C9orf102 RAD26L

**Immunogen:**

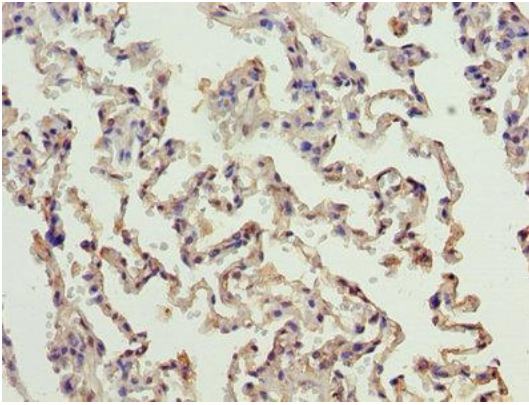
Recombinant Human DNA excision repair protein ERCC-6-like 2 protein (72-371AA).

**Storage:**

Preservative: 0.03% Proclin 300. Constituents: 50% Glycerol, 0.01M PBS, PH 7.4

## Product Images

---



Immunohistochemistry of paraffin-embedded human lung tissue using PACO25416 at dilution of 1:100.