

PACO25396

Product Information

Size:

50ug

Reactivity:

Human

Source:

Rabbit

Isotype:

IgG

Applications:

ELISA, WB, IF

Recommended dilutions:

ELISA:1:2000-1:10000, WB:1:1000-1:5000,
IF:1:50-1:200

Protein Background:

This protein is one of the nuclear-coded polypeptide chains of cytochrome c oxidase, the terminal oxidase in mitochondrial electron transport.

Gene ID:

COX5B

Uniprot

P10606

Synonyms:

Cytochrome c oxidase subunit 5B, mitochondrial (Cytochrome c oxidase polypeptide Vb), COX5B

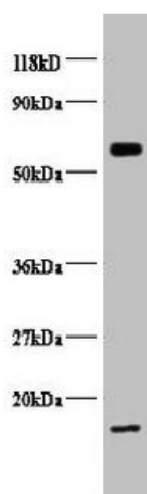
Immunogen:

Recombinant Human Cytochrome c oxidase subunit 5B, mitochondrial protein (32-129AA).

Storage:

Preservative: 0.03% Proclin 300. Constituents: 50% Glycerol, 0.01M PBS, PH 7.4

Product Images



Western blot

All lanes: COX5B antibody at 2 μ g/ml + EC109 whole cell lysate

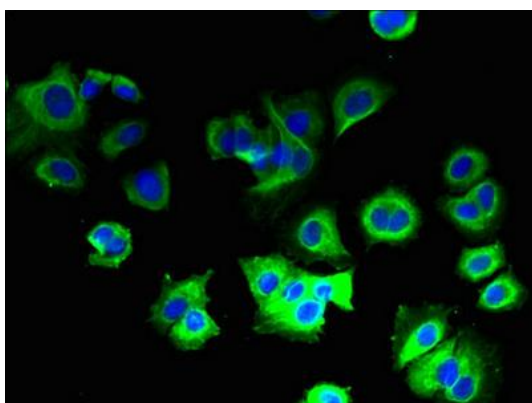
Secondary

Goat polyclonal to Rabbit IgG at 1/15000 dilution

Predicted band size: 14 kDa

Observed band size: 14, 65 kDa

.



Immunofluorescent analysis of MCF-7 cells using PACO25396 at dilution of 1:100 and Alexa Fluor 488-conjugated AffiniPure Goat Anti-Rabbit IgG(H+L).