

EVA1C Antibody



PACO25356

Product Information

Size:

50ug

Reactivity:

Human

Source:

Rabbit

Isotype:

IgG

Applications:

ELISA, WB, IHC

Recommended dilutions:

ELISA:1:2000-1:10000, WB:1:500-1:2000,
IHC:1:20-1:200

Protein Background:

Binds heparin.

Gene ID:

EVA1C

Uniprot

P58658

Synonyms:

Protein eva-1 homolog C (Protein FAM176C) (SUE21), EVA1C, C21orf63 C21orf64
FAM176C

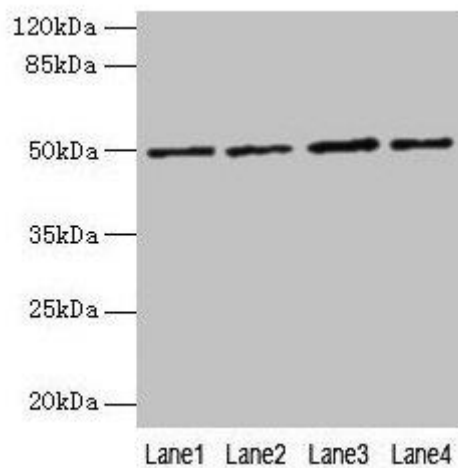
Immunogen:

Recombinant Human Protein eva-1 homolog C protein (49-322AA).

Storage:

Preservative: 0.03% Proclin 300. Constituents: 50% Glycerol, 0.01M PBS, PH 7.4

Product Images



Western blot

All lanes: EVA1C antibody at 5 μ g/ml

Lane 1: Hela whole cell lysate

Lane 2: Jurkat whole cell lysate

Lane 3: 293T whole cell lysate

Lane 4: HL60 whole cell lysate

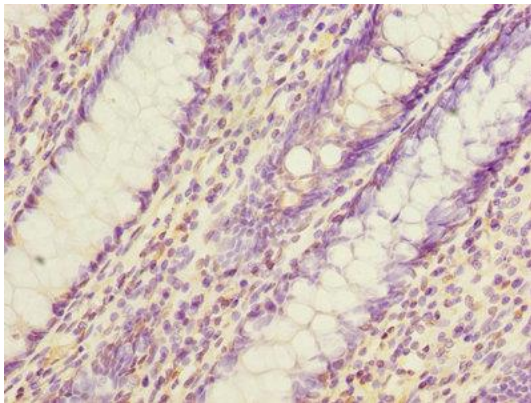
Secondary

Goat polyclonal to rabbit IgG at 1/10000 dilution

Predicted band size: 50, 8 kDa

Observed band size: 50 kDa

.



Immunohistochemistry of paraffin-embedded human colon cancer using PACO25356 at dilution of 1:100.